



Product List for

# SQUID JIGGING VESSELS



Japan Ship Machinery & Equipment Association



# CONTENS

CONTENTS	01-02
CONTACT LIST	03-04

## 01 Main Engine

Low Speed 4 Stroke Diesel Engine AKASAKA DIESELS LIMITED	05
HANSHIN Low Speed 4stroke Engine “LA” series THE HANSHIN DIESEL WORKS, LTD.	06
Medium Speed Diesel Engines IHI POWER SYSTEMS CO., LTD.	07
Propulsion Engine YANMAR POWER SOLUTIONS CO., LTD.	08

## 02 Auxiliary Engine

Auxiliary Engine YANMAR POWER SOLUTIONS CO., LTD.	08
--	----

## 03 Engine Components

Plain Bearing Isodametal Co., Ltd.	09
---------------------------------------	----

## 04 Engine Control System

H-2 , HC-2, HD-2 Maneuvering Handle Nabtesco Corporation	10
NC-1,NC-3 Maneuvering Handle Nabtesco Corporation	11

## 05 Propeller

Fixed Pitch Propeller Kamome Propeller Co., Ltd.	12
Controllable Pitch Propeller A-Type Series Kamome Propeller Co., Ltd.	13
Controllable Pitch Propeller B-Type Series Kamome Propeller Co., Ltd.	14

## 06 Thruster

TCB-Type Series TFA -Type Series Kamome Propeller Co., Ltd.	15
--	----

## 07 Pump

Centrifugal Pump model TVS / MSS Teikoku Machinery Works, Ltd.	16
---	----

## 08 Fresh Water Generator

AQUAPET MARK II REVERSE OSMOSIS DESALINATION SYSTEM SASAKURA ENGINEERING CO.,LTD.	17
OASIS Fresh Water Generators SASAKURA ENGINEERING CO.,LTD.	18

## 09 Bilge Separator

BILGE SEPARATOR PURELIO SASAKURA ENGINEERING CO.,LTD.	19
--	----

## 10 Refrigeration

Reciprocating Compressor MAYEKAWA MFG. CO., LTD.	20
Screw Compressor MAYEKAWA MFG. CO., LTD.	21
Screw Compressor Unit MAYEKAWA MFG. CO., LTD.	22

## 11 Generator

Shaft Generator TAIYO ELECTRIC CO., LTD.	23
AC Generator TAIYO ELECTRIC CO., LTD.	24

## 12 Switchboard

MAIN SWITCH BOARD TAIYO ELECTRIC CO., LTD.	25
---	----

## 13 Motor

MOTOR TAIYO ELECTRIC CO., LTD.	26
-----------------------------------	----

## 14 Navigation Light

LED Navigation Light NIPPON SENTO CO.,LTD.	27
---	----

## 15 LED Fishing Light

800/600W Metal Halide Replacement LED Fishing Light JAPANMAGNETS., INC	28
5000W Underwater Fishing Light with a 30m Illumination Depth JAPANMAGNETS., INC	29

## 16 Underwater Light

Metal Halide Lamp “MW Series” Nichimo Co.,Ltd. Sendai Branch	30
Halogen Lamp “QW Series” Nichimo Co.,Ltd. Sendai Branch	30

## 17 Radar

Marine Radar JMR-5400 Series Japan Radio Co.,Ltd.	31
--	----

## 18 Auto Pilot

Auto Pilot PR-3000 TOKYO KEIKI INC.	32
--	----

## 19 Gyrocompass

Gyrocompass TG-8100 TOKYO KEIKI INC.	33
Fiber Optic Gyrocompass TF-900 TOKYO KEIKI INC.	34
Gyrocompass accessories TOKYO KEIKI INC.	35

## 20 Fish Finder

TruEcho CHIRP with Unique Fish Size Indicator FCV-1900G FURUNO ELECTRIC CO.,LTD.	36
---	----

## 21 Sonar

Full Circle Color Scanning Sonar FSV-25 MARK-2 FURUNO ELECTRIC CO.,LTD.	37
--	----

## 22 Current Indicator

Doppler Current Meter JLN-652 Japan Radio Co.,Ltd.	38
---	----

## 23 AIS

AIS JHS-183 Japan Radio Co.,Ltd.	39
406MHz Satellite Emergency Position Indicating Radio Beacon Tron 60AIS Japan Radio Co.,Ltd.	40

## 24 GMDSS

NAVTEX Receiver for GMDSS NCR-333 Japan Radio Co.,Ltd.	41
Radar Transponder Tron SART20 Japan Radio Co.,Ltd.	42
406MHz Satellite Emergency Position Indicating Radio Beacon Tron 60AIS Japan Radio Co.,Ltd.	40

## 25 Parachute Anchor

Parachute Anchor <PARA ANCHOR> Nichimo Co.,Ltd. Sendai Branch	43
--	----

## 26 Squid Jigging Machine

Fully Automatic Squid Fishing Machine “Super SE-SX” Nichimo Co.,Ltd. Sendai Branch	44
Automatic Squid Fishing Machine MY-8 TOWA DENKI SEISAKUSHO, Inc.	45

## 27 Thermometer

DSN-2000 DIGITAL THERMOMETER for SEA WATER MURAYAMA DENKI LTD.	46
---	----

## 28 Radio

MF/HF Radio Equipment JSS-2150/2250/2500 Japan Radio Co.,Ltd.	47
Marine VHF Radiotelephone JHS-800S Japan Radio Co.,Ltd.	48

## 29 Rudder

GATE RUDDER SYSTEM Kamome Propeller Co., Ltd.	49
K-7 RUDDER Kamome Propeller Co., Ltd.	50
REACTION and BLUE RUDDER Kamome Propeller Co., Ltd.	51

## 30 Steering Gear

Steering Gear TOKYO KEIKI INC.	52
-----------------------------------	----

## 31 Paint

Antifoulings Chugoku Marine Paints, Ltd.	53
---	----

## 32 Electric Cable

Marine electric cable HIEN ELECTRIC INDUSTRIES.LTD.	54
--	----

## 33 Conveyance Machine

Frozen tray Conveyor ONODERA IRON WORKS CO., LTD.	55
Vertical lift conveyor ONODERA IRON WORKS CO., LTD.	56
Hull-mounted unloading conveyor ONODERA IRON WORKS CO., LTD.	57

## 34 Lifesaving Equipment

Inflatable PDF for Commercial use TK-2720S Takashina Life Preservers Co., Ltd.	58
Inherently Buoyant Lifejacket TKW-3B Takashina Life Preservers Co., Ltd.	59

## 35 Fishing Equipment

Squid Hook Assembly Nichimo Co.,Ltd. Sendai Branch	60
Squid Jigging Fishing Gears SANWA COMMERCIAL CO., LTD.	61

MEMO	62
------	----



For smoother scanning, display the QR code at a closer zoom level.

# CONTACT LIST

1

AKASAKA DIESELS LIMITED



TEL

+81-3-6860-9085

MAIL

kaigaieigyou@akasaka.co.jp



Website

7

JAPANMAGNETS., INC



TEL

+81-266-75-1734

MAIL

fisheries@japanmagnets.com



Website

13

Nichimo Co.,Ltd. Sendai Branch



TEL

+81-22-726-5091

MAIL

takeshi\_minosawa@nichimo.co.jp,  
kohei\_kasai@nichimo.co.jp



Website

19

Takashina Life Preservers Co., Ltd.



WEB FORM

<https://tlpc.co.jp/contact/>



Website/  
Contact form

2

Chugoku Marine Paints, Ltd.



WEB FORM

<https://www.cmp-chugoku.com/global/network/worldwide.html>



Website/  
Contact form

8

Japan Radio Co.,Ltd.



TEL

+81-3-6832-1721

WEB FORM

[https://www.jrc.co.jp/en/contact/marine\\_inquiry](https://www.jrc.co.jp/en/contact/marine_inquiry)



Website/  
Contact form

14

NIPPON SENTO CO., LTD.



TEL

+81-6-6949-8901

MAIL

Nissen-osaka@nipponsento.co.jp



Website

20

TEIKOKU MACHINERY WORKS, LTD.



WEB FORM

<https://english.teikokupump.co.jp/inquiry/>



Website/  
Contact form

3

FURUNO ELECTRIC CO.,LTD.



WEB FORM

<https://www.furuno.co.jp/en/corporate/bases/overseas.html?redirect=qr>



Website/  
Contact form

9

Kamome Propeller Co., Ltd.



TEL

+81-45-811-2461

WEB FORM

<https://www.kamome-propeller.co.jp/en/contact/form/>



Website/  
Contact form

15

ONODERA IRON WORKS CO., LTD.



TEL

+81-22-726-5091

MAIL

kohei\_kasai@nichimo.co.jp



Website

21

THE HANSHIN DIESEL WORKS, LTD.



TEL

+81-78-335-6001

MAIL

overseas-section@hanshin-dw.co.jp



Website

4

HIEN ELECTRIC INDUSTRIES.LTD.



TEL

+81-6-6226-1501

MAIL

koide@hien.co.jp



Website

10

MAYEKAWA MFG. CO., LTD.



MAIL

global-contact@mayekawa.co.jp



Website

16

SANWA COMMERCIAL CO., LTD.



TEL

+81-3-3434-6061

MAIL

Tokyo@scc-sanwa.co.jp



Website

22

TOKYO KEIKI INC.



TEL

+81-3-3737-8611

WEB FORM

<https://www.tokyokeiki.jp/e/inquiry.html>



Website/  
Contact form

5

IHI POWER SYSTEMS CO., LTD.



TEL

+81-3-4366-1226

MAIL

takahashi0723@ihi-g.com



Website

11

MURAYAMA DENKI LTD.



TEL

+81-42-703-3905

MAIL

info@murayama-denki.co.jp



Website

17

SASAKURA ENGINEERING CO.,LTD.



TEL

+81-6-6473-2134

WEB FORM

<https://www.sasakura.co.jp/en/contact>



Website/  
Contact form

23

TOWA DENKI SEISAKUSHO, Inc.



TEL

+81-138-41-4410

WEB FORM

<http://towa-denki.co.jp/en/inquiry/>



Website/  
Contact form

6

Isodametal Co., Ltd.



TEL

+81-3-3759-5351

MAIL

info@isodametal.co.jp



Website

12

Nabtesco Corporation



TEL

+81-78-967-5361

MAIL

Newbuilding@nabtesco.com



Website

18

TAIYO ELECTRIC CO., LTD.



TEL

+81-3-3093-3067

MAIL

naoyuki-uezono@taiyo-electric.co.jp



Website

24

YANMAR POWER SOLUTIONS CO., LTD.



WEB FORM

<https://www.yanmar.com/global/support/contact/form/?category=marinecommercialform/>



Website/  
Contact form



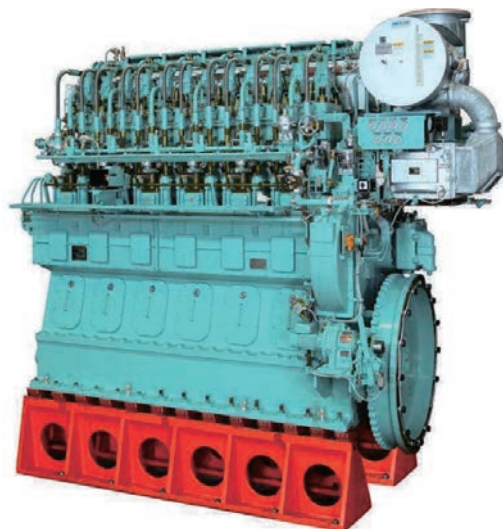
# 01 Main Engine >>> Low Speed 4 Stroke Diesel Engine

AKASAKA DIESELS LIMITED

Low Running Cost & Environmentally Friendly Diesel Engine



**AKASAKA DIESELS LIMITED**



## •Outline of Company

Akasaka Diesels Limited is one of the leading manufactures of main engine for ship propulsion in Japan. We have 115 years history. Akasaka Diesels have grown up together along with the development of Japanese domestic fishery industry, also expanding its products coverage to even bigger merchant vessels. Today its products are known worldwide by its high reliability and fine performance based on authentic technologies being succeeded over generations.

## •Low speed 4 stroke diesel engine AX series [1,176 – 1,912 kW]

AX series is our latest model 4 stroke engine and suitable for fishing vessels.

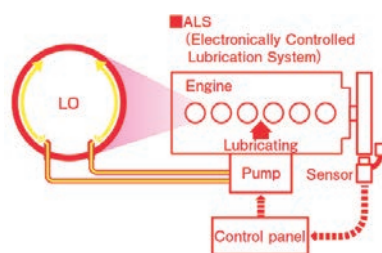
Model	Output (kW)	Eng.speed (min-1)	Bore (mm)	Stroke (mm)	Application	Weight (kg)
AX28	1,176	310	280	600	Without clutch	23,600
	1,323	320			With reversing gear	26,300
AX31	1,323	290	310	620	Without clutch	33,000
					With reversing gear	35,300
AX33B	1,471	280 300	330	620	Without clutch	33,000
	1,618	310			With reversing gear	35,300
AX34	1,765	280	340	660	Without clutch	40,100
					With clutch	41,400
AX34A	1,765	260	340	720	Without clutch	43,000
	1,912	270			With reversing gear	46,500

## •Saving fuel oil cost

AX series obtains the lowest specific fuel consumption in the same class engine. A low speed and a big torque with a large-diameter screw enhance propulsive efficiency, and realize low specific fuel consumption.

## •Low lubricating oil consumption [ALS + AP ring]

ALS (Electronically controlled lubrication system) can lubricate necessary amount as it is needed, which realizes 0.5 g/kWh in cylinder lubrication rate. With AP ring which restrains carbon from adhering the piston and prevents the sliding surface of liners from polishing, it keeps the replenishment of system oil almost naught.



## INQUIRIES

Tokyo head office, Oversea Sales Dept.  
4th floor, Shin-Kokusai Bldg, 3-4-1, Marunouchi, Chiyoda-Ku, Tokyo Japan.  
Tel:+81-3-6860-9085  
E-mail:kaigaieigy@akasaka.co.jp  
<https://www.akasaka-diesel.jp>

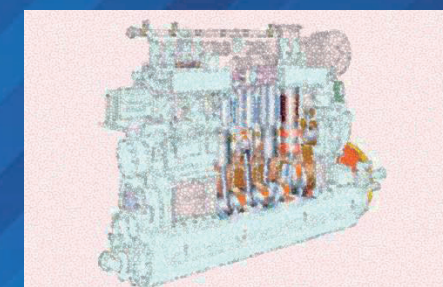
# 01 Main Engine >>> HANSHIN Low Speed 4stroke Engine “LA” series

THE HANSHIN DIESEL WORKS, LTD.

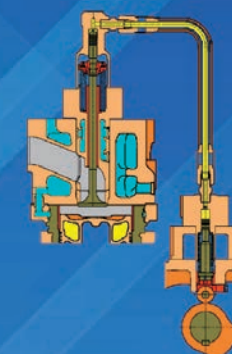
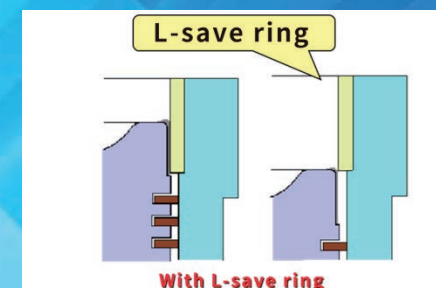
HANSHIN Low Speed 4stroke Engine

“LA” series ~Low-speed Advance~

(LA26, LA28, LA30, LA32, LA34 type)



- ☆ Low Fuel oil Consumption
- ☆ Low Lubricating oil Consumption
- ☆ Low maintenance cost
- ☆ High durability
- ☆ Long lifetime



The LA series uses fuel-efficient marine engines with consideration for low NOx emission (reduction of CO2). The LA series reduces noise and prevents oil splashing by adopting a hydraulic valve driving system. By equipping an L-save ring on the upper part of the cylinder liner, surface wear of the cylinder liner is lessened and lubricating oil consumption is reduced.

**HANSHIN DIESEL**

**THE HANSHIN DIESEL WORKS, LTD.**

**<https://www.hanshin-dw.co.jp/en/>**

**TEL: +81-78-335-6001**

**E-mail: overseas-section@hanshin-dw.co.jp**



# 01 Main Engine >>> Medium Speed Diesel Engines

IHI POWER SYSTEMS CO., LTD.

## IHI POWERSYSTEMS CO., LTD



### More than century of experience leads to innovative power

NIGATA is the core brand of IHI Power Systems Co., Ltd., the only manufacturer in the world with both engines and azimuth Z-Pellers that is of our own, original design without integrating or merging with other brands.

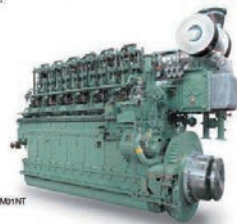
With more than 100 years' history, NIGATA is proud of its reliability and reputation among harbour and terminal tug and OSV operators across the world. The Japan-headquartered company manufactures engines producing a total of around 1m horsepower a year and nearly 5,000 units of Z-Pellers have been delivered around the world. As an all-round power system provider, it is also involved in diesel engines, gas engines, and gas turbines co-generation activity.



## Low Speed Diesel Engine

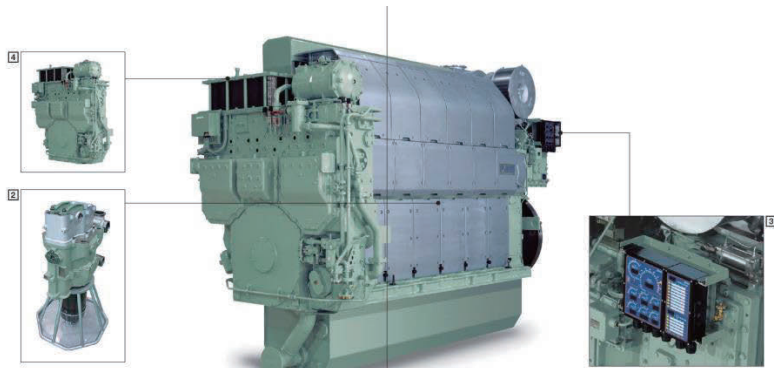
### Durability with Japanese 4 stroke Low Speed Engine

To meet the long time customer's expectations, NIGATA has continually developed and manufactured the 4 stroke low speed diesel engines and the total propulsion systems for in-land general cargo and ocean fishery vessel.



Low Speed Diesel Engine Power Range

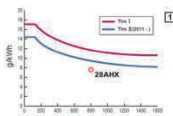
Model	kWm	1000				2000				3000			
	PS	1000	2000	3000	4000	1000	2000	3000	4000	1000	2000	3000	4000
6M26ATE													
6M26BT													
6M26NT													
6M31BT													
6M31NT													
6M34RT													
6M34BT													
6M34NT													



#### 1 High efficiency and low emissions

By employing the Miller cycle system and VVT (Variable Valve Timing) technology, 25AHK series has realized the best performance and low fuel consumption.

25AHK engine complies fully with IMO NOx regulation Tier II.



#### 2 Easy maintenance and Low operating cost

The Cylinder unit design that integrates the piston, cylinder liner and cylinder head helps reduce the amount of maintenance work and cost, makes it easier to remove these parts from the crankcase.

#### 3 Gauge board "Grafico"

The latest electrical type gauge board "Grafico" is installed on 25AHK engine. Displays engine status, engine speed, pressure and temperature, digitally and as bar graphs using LEDs, for excellent visibility and rapid assessment to safe engine operations. Interface includes industry-standard signaling system to ensure compatibility with external systems.

#### 4 Front-end unit (Optional)

Auxiliary equipment, including the lubricating oil system, fuel system, and cooling water system, are integrated into a single unit located at the front of the engine.

IHI POWER SYSTEMS CO., LTD

URL: [www.ihl.co.jp/ips/](http://www.ihl.co.jp/ips/)

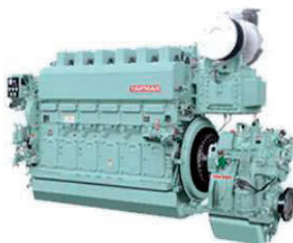
# 0102 Main Engine / Auxiliary Engine >>> Propulsion Engine / Auxiliary Engine

YANMAR POWER SOLUTIONS CO., LTD.

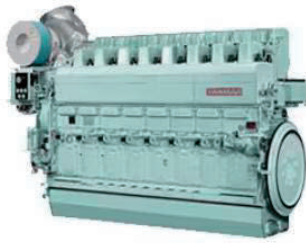
## YANMAR Marine Engines For Fishing Vessels

We develop reliable diesel engines that have good durability. Our technology enables great economic efficiency and environmental performance.

### Propulsion Engines



6EY26W



8EY26W

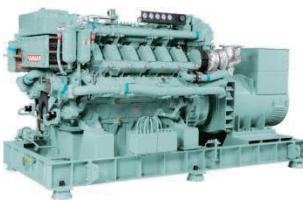
0 1000 2000 3000 [kW]

6EY26W				1471kW~1920kW
8EY26W				2060kW~2560kW

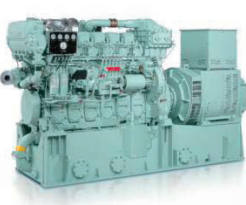
### Auxiliary Engines



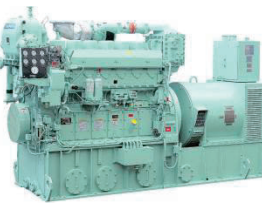
6AYL



12AYL



6NY16LW



6N165LW

#### <High Speed>

0 200 400 600 800 1000 [kWe]

6AYL				320kWe~400kWe		
12AYL				880kWe~1000kWe		

#### <Medium Speed>

0 200 400 600 800 1000 [kWe]

6NY16LW				180kWe~400kWe		
6N165LW				320kWe~450kWe		

YANMAR POWER SOLUTIONS CO., LTD.

HP : <https://www.yanmar.com/global/marinecommercial/>

Contact: <https://www.yanmar.com/global/support/contact/form/?category=marinecommercial>

**Thin-walled plain bearings specialized in alloy bearings such as copper alloys and white metal.**

From design and development to manufacturing, we provide high-standard, high-quality bearings through in-house integrated production.

**Applicable fields :**

From special environments (high speeds and high temperatures) in chemical plants to marine engines and reducers. Can be used in a wide range of fields, including high-load, high-durability bearings used in

Since its establishment in 1905, we have specialized in plain bearings focused on alloy bearings such as copper alloys and white metal. We have a proven track record of supplying to various fields, including marine vessels, industrial machinery, and chemical plants. In particular, we excel in the manufacturing of thin-walled plain bearings, which are rare in Japan.



centrifugal casting



precision machining



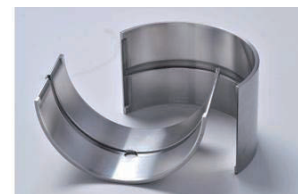
correction/correction



plating process



Micro analysis  
component analysis



thin wall plain bearing

We propose the optimal bearing based on performance requirements and operating conditions. To ensure that the bearing functions in the best condition without trouble, we excel in the design and manufacturing of thin-walled plain bearings (thickness from 2 mm), which require advanced expertise backed by proven experience. This includes setting the optimal oil film thickness, a crucial factor for plain bearings, and determining the assembly conditions necessary for reliable operation.



**Isodametal Co., Ltd.**

WEB: <https://www.isodametal.co.jp/>

MAIL: [info@isodametal.co.jp](mailto:info@isodametal.co.jp)

TEL: +81-3-3759-5351

## Pneumatic Maneuvering Handle

### H-2, HC-2, HD-2 (Pneumatic)

**Flexible response to customer's required specification**



- We can meet any request from our customers by many variations of pressure control valve, change over valves, and micro switches.

- Waterproof model is available.

#### Maximum Dimensions

Vertical 204 mm

Horizontal 116 mm

Height (top of panel) 250 mm

Height (bottom of panel) 170 mm

- Type: H-2, HC-2, HD-2
- Output signals: Control air pressure (for governor), forward/backward switching signal (air, contact), stop signal (contact)

#### <INQUIRIES>

**Nabtesco Corporation**

Marine Control Systems Company

E-mail: [newbuilding@nabtesco.com](mailto:newbuilding@nabtesco.com)

<https://marine.nabtesco.com/en/>



## Pneumatic Maneuvering Handle

### NC-1, NC-3 (Pneumatic)



Flexible response to customer's required specification

- We can meet various request from customers with two additional change over valves.
- Operation performance and visibility is excellent by our original design.

- Type: NC-1/NC-3
- Output signals: Control air pressure (for governor), forward/backward switching signal (air, contact), stop signal (air, contact)

#### Maximum Dimensions

Vertical	300 mm
Horizontal	200 mm
Height (top of panel)	197 mm
Height (bottom of panel)	280 mm

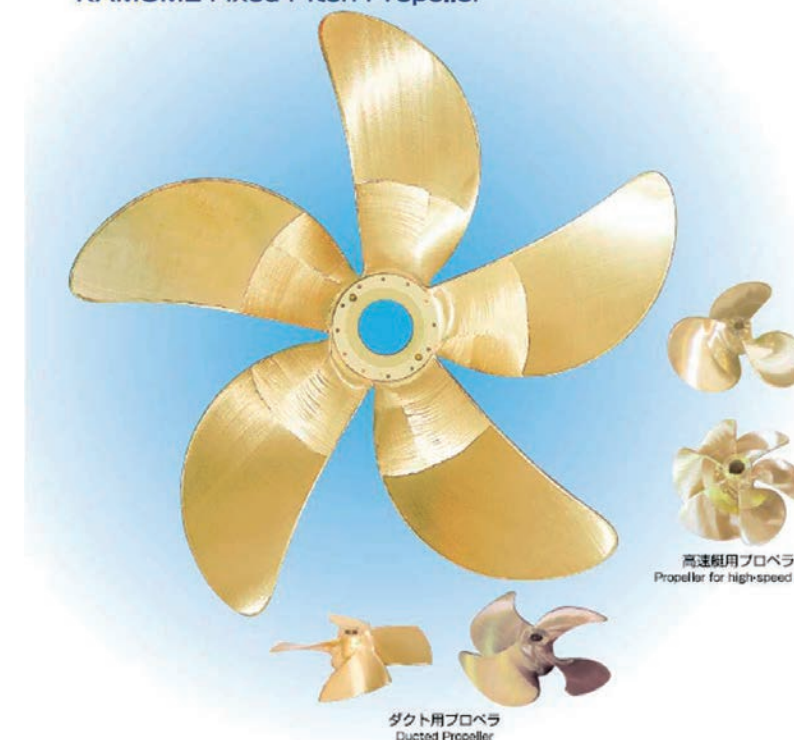
<INQUIRIES>

**Nabtesco Corporation**

Marine Control Systems Company  
E-mail: [newbuilding@nabtesco.com](mailto:newbuilding@nabtesco.com)  
<https://marine.nabtesco.com/en/>

## KAMOME Fixed Pitch Propeller

KAMOME Fixed Pitch Propeller



Details

Fixed Pitch Propeller (FPP) has been developed since 1924 when the company was founded. For 100 years since then, Kamome has been researching and developing continuously for all of the technical features such as designing, analyzing system and production etc. supported by a lot of customers' satisfaction and reliability.

Kamome continues to strengthen its position for getting more customers' satisfaction by developing more varieties and better features of FPP in accordance with future requirements for the next generation.



**KAMOME**  
PROPELLER

**Kamome Propeller Co., Ltd.**

690 Kamiyabe-cho, Totsuka-ku, Yokohama 245-8542 Japan  
Tel: +81-45-811-2461  
Contact Foam :  
<https://www.kamomepropeller.co.jp/en/contact/form/>

## KAMOME

# Controllable Pitch Propeller A-Type Series

Medium and Small type CPP



CPC-80A Type CPP for 1,500kW



Details

- KAMOME CPP have developed in 1961 by our original techniques.
- CPC-A type series are mainly applied for medium and small ships and propeller hub is fore and aft split type.

### Features

- Supported by our extensive experience, it is simple but solid construction and easy operation and maintenance.
- An original control system is adopted for keeping ship's operating efficiency as the largest condition.
- Continuous investigation of the propeller efficiency and anti-vibration/noise promise you safe and comfortable sailing.



**Kamome Propeller Co., Ltd.**

690 Kamiyabe-cho, Totsuka-ku, Yokohama 245-8542 Japan  
Tel: +81-45-811-2461

Contact Form :

<https://www.kamomepropeller.co.jp/en/contact/form/>

## KAMOME

# Controllable Pitch Propeller B-Type Series

Medium and large type CPP



CPC-180 Type CPP for 21,650PS



Details

### Features

- Since development of our original CPP in 1961, nearly 5,500 units of CPP including A type has been produced and installed in various kinds of vessels, such as Ro-Ro ship, RoPax ferry, Container ship, Tanker, Offshore support vessel, Coast Guard patrol ship, Research ship, not only in Japan but also all over the world.
- The biggest CPP so far delivered is for 21,650PS of Main Engine with propeller diameter of 6,000mm x 125 min<sup>-1</sup> for RO-RO Ship servicing in Japan.



**Kamome Propeller Co., Ltd.**

690 Kamiyabe-cho, Totsuka-ku, Yokohama 245-8542 Japan  
Tel: +81-45-811-2461

Contact Form :

<https://www.kamomepropeller.co.jp/en/contact/form/>



## KAMOME SIDE THRUSTER TCB-Type Series / TFA -Type Series

Excellent performance and high reliability have been realized through the delivery of more than 4,500 units since 1960.

### TCB-Type Series CPP-Type Thruster



#### Features

- Employing thicker duct plate and newly developed propeller have achieved less noise and vibration, which ensures a comfortable living environment on board.
- For easy operation, KTC100 Control System has been equipped as a standard accessory.
- Tough and rational structural design based on tank test has accomplished superior strength and durability and easy maintenance.

### TFA-Type Series Fixed Pitch Propeller Type Thruster



#### Features

- Superior strength
- Less noise and vibration
- Easy installation and periodical inspection
- Various type of driving



TCB-type details



TFA-type details



### Kamome Propeller Co., Ltd.

690 Kamiyabe-cho, Totsuka-ku, Yokohama 245-8542 Japan  
Tel: +81-45-811-2461  
Contact Form:  
<https://www.kamomepropeller.co.jp/en/contact/form/>



## Teikoku Machinery Works Centrifugal Pump



Model TVS



Model MSS

Pump	Specifications(60Hz)				Construction		
	Capacity (m³/h)		Total Head (m)		Vertical or Horizontal	Impeller Stage	Coupling Rigid(R) or Flexible(F)
	Min.	Max.	Min.	Max.			
TVS	30	400	13	67	V	1	R
MSS	2	80	5	65	V/H	1	F

Company Name : Teikoku Machinery Works, Ltd.

Established : October 1, 1934

Capital : 6.75 million yen

Business : General machinery manufacture; Design, manufacture, and sales of pumps for marine vessels

Contact Address: <https://english.teikokupump.co.jp/inquiry/>





## AQUAPET MARK II REVERSE OSMOSIS DESALINATION SYSTEM



### FEATURES

#### ● Highly efficient module

A highly efficient Reverse Osmosis Module is used which is not subject to damage by rust or bacterial attack, thus providing a long service life and continuous troublefree operation.

#### ● Compact construction

The equipment is composed of a pretreatment unit and a desalination unit. This compact unit permits easy installation in locations where the space is limited.

#### ● Easy operation

Freshwater is obtained by the operation of high-pressure pump and a pressure regulating valve. There is little to go wrong and it is simple to operate.

#### ● Unusual desalting capability

The reverse osmosis module is exclusively designed for the removal of organic matter, bacteria and colloids and highly efficient. Freshwater with a salt content of less than 500ppm (TDS) is obtained.



**SASAKURA ENGINEERING CO.,LTD.**

7-32, Takejima 4-Chome, Nishiyodogawa-ku,  
 Osaka. 555-0011, Japan

Tel:+81-6-6473-2134 FAX:+81-6-6473-5540

<https://www.sasakura.co.jp/en>



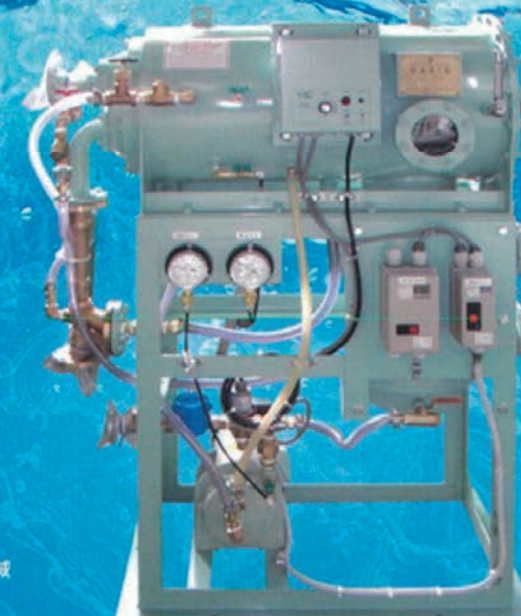
## オアシス造水装置 OASIS Fresh Water Generators



VA シリーズ | VA Series

オアシス造水装置は、昭和 38 年に第一号機を発売以来既に 7,000 台を超える納入実績を有し、漁船、貨物船、官庁船、作業船、その他あらゆる船舶に採用され好評を頂いております。  
 くオアシス VA シリーズは、当社独自の技術と豊富な経験をもとに、さらに高性能化された造水装置です。

Over 7,000 units of these OASIS type fresh water generators have been delivered since they were first commercialized in 1963. They are adopted for a variety of small ship and boats including fishing boats, cargo boats, official ships and work ships and enjoy a high reputation.  
 The "OASIS VA Series" is an advanced fresh water generator specially developed through SASAKURA's superior technologies and long manufacturing experience.



#### ● 特徴

1. 据付スペースが少ない
2. 配管、配線が簡単工事費削減
3. 運転操作が安全、簡単
4. 高純度の蒸留水
5. 保守点検が安易な構造
6. 廃熱利用の為、省エネルギー

#### ▲ Features

1. Allows the installation space to be reduced.
2. Facilitates piping and wiring, thus enabling a cost effective installation.
3. Ensures safe and easy operations.
4. Produces a high purity distillate.
5. Built to facilitate the maintenance and inspection.
6. Utilizes the waste heat energy-saving feature.



**SASAKURA ENGINEERING CO.,LTD.**

7-32, Takejima 4-Chome, Nishiyodogawa-ku, Osaka. 555-0011, Japan

Tel:+81-6-6473-2134 FAX:+81-6-6473-5540







## BILGE SEPARATOR PURELIO

For Environmet, More Compact,  
More Efficiency, More easily maintenance  
Future type Bilge Separator

Oil Content 5 ppm  
(DNV type Approved)



Easy  
Maintenance

Low  
Running  
Costs

Compact  
Design

Sasakura manufactured and sold the first bilge separator in 1963.  
In response to increasing environmental awareness and growing market needs  
in recent years, we have achieved an oil content of 5 ppm (DNV Type Approved  
under CLASS PROGRAMME DNVGL-CP-0208) in treated water.  
Our bilge separators provide unmatched bilge separation performance and  
easy maintainability.



7-32, Takejima 4-Chome, Nishiyodogawa-ku,  
Osaka. 555-0011, Japan  
Tel:+81-6-6473-2134 FAX:+81-6-6473-5540  
<https://www.sasakura.co.jp/en>

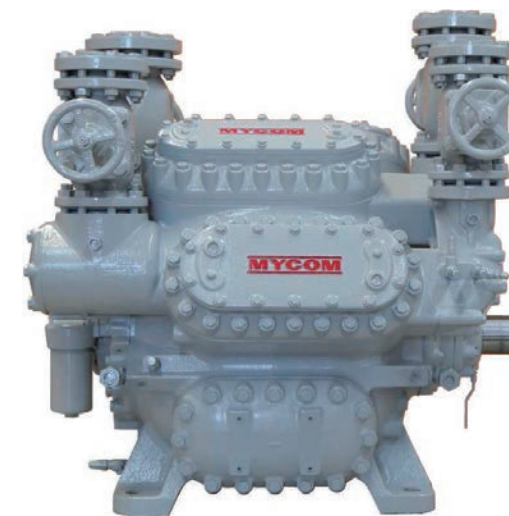


## MYCOM COMPRESSOR SERIES (Reciprocating type)

Excellence in performance, durability, and high-  
Pressure resistance:  
Next-generation energy saving compressor

Reciprocating Compressor  
[Two Stage] Open Type

### M II-SERIES



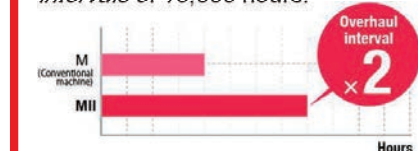
\*Some optional items are included in this photo.

#### High Performance Derived from New Design

This newly designed compressor minimizes internal  
heating of the intake gas resulting in the highest level of  
performance in our product portfolio

#### Much Improved Overhaul Interval

The MII series incorporates a new valve structure with  
improved durability and dramatically extended overhaul  
intervals of 16,000 hours.



Operating condition: 800 to 1200 rpm / Depend on the refrigerant  
\* Under normal operation

#### Applications

This model serve large-scale deep freezing applications.

#### Easy Maintenance

Hydraulic lines for capacity control are incorporated into the  
casing design, allowing simplified package designs as well  
as easy replacement of consumable components.

#### Multiple Applications

Multiple configurations are available in drive type (direct  
drive/belt drive) and refrigerant compatibility (Ammonia  
and Fluorocarbon refrigerants).

#### Specifications

Model <sup>*1</sup> (N/F)		62M II
Item		
Refrigerant		Ammonia / HFCs (R404A, R507A)
Compressor type		Reciprocating, Open Type
Number of cylinders		Low stage : 6 High stage : 2
Bore	mm	146
Stroke	mm	106
Displacement <sup>*2</sup>	m <sup>3</sup> /h	Low stage : 620 High stage : 207
Rotation speed	rpm	800-1500 <sup>*3</sup>
Drive method		Direct drive / Overhang motor / V-belt
Capacity control	%	100/66/33

\*1. Specify the refrigerant by adding a prefix to the type code (N = Ammonia / F = Fluorocarbons).

\*2. Displacement at 970 rpm

\*3. The range of rotation speed varies by operating conditions. Please refer to the ranges of use stated in the operating instructions.



MAYEKAWA MFG.CO.,LTD.

[Inquirers]global@mayekawa.com



[www.mayekawa.com](http://www.mayekawa.com)



## MYCOM COMPRESSOR SERIES (Screw type)

Highly-efficient screw compressor with wide product range and No.1 track record

Screw Compressor  
[Single Stage] Open Type

### SCV SERIES



**Variable Vi Mechanism (2.63-5.80range) to Efficiently Cover Wide Temperature Range**

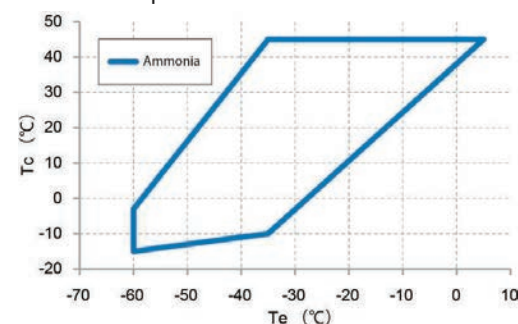
**Offers Wide Range of Capacities**

Available in 13 models, the SCV series covers a wide displacement range from 415 m³/h to 4740m³/h\*.

\* At 2950 rpm

**Applications**

Operates over a wide range of temperature and serves in industrial refrigerating, freezing, and air conditioning applications. Also workable as a booster compressor.



**Longtime Seller**

With a proven 4:6 rotor configuration, the SCV series offers optimal performance to customers.

#### Specifications

Model (N/P/F)*1 *2			160V			200V			250V				320V		
Item			SD	MD	LD	SD	MD	LD	SD	MD	LD	LLD	SD	MD	LD
Refrigerant			Ammonia / Propane, Propylene / HFCs												
Theoretical displacement	2950rpm	m³/h	415	519	622	810	1020	1210	1580	1980	2360	2800	3170	3960	4740
	3550rpm	m³/h	499	624	749	975	1220	1460	1900	2380	2840	3370	3820	4760	5700
Minimum rotation speed		rpm	1450*3												
Maximum rotation speed		rpm	4500*3												
Rotation direction			CCW as viewed from motor												
Capacity control		%	100-30												
Gas inlet port			MYCOM 125A *4			MYCOM 150A *4			MYCOM 250A *4				MYCOM 350A *4		
Gas outlet port			MYCOM 100CD *4			MYCOM 125CD *4			MYCOM 150CD *4				MYCOM 200CD *4		

\* 1. Specify the refrigerant by adding a prefix to the model code (N = ammonia / P = propane, propylene / F = fluorocarbons).

\* 2. Please contact us separately for models with a designation ending with G (downward discharge).

\* 3. The range of rotation speed varies by operating conditions. Please refer to the ranges of use stated in the operating instructions.

\* 4. Flanges with a designation starting with MYCOM are in-house products of MYCOM.



MAYEKAWA MFG.CO.,LTD.

[Inquirers]global@mayekawa.com



www.mayekawa.com

## MYCOM COMPRESSOR SERIES (Compressor Unit)

**Industrial Refrigeration Packages  
High Efficiency Refrigerant**

Screw Compressor  
[Single Stage]

### MCN SERIES



**Adopted Natural Refrigerant Ammonia**

- High capacity@BkW
- Low environmental impact

GWP (Global Warming Potential) < 1  
ODP (Ozone Depletion Potential) = 0

**FLEXIBLE SELECTION**

- Compressor : SCV series, UD series
- Oil cooler : Thermosyphon, Water cooled, Liquid injection
- Motor : Can be selected request
- Option : Full flow lubrication and Dual oil filter selection available

**WIDE TEMPERATURE RANGE**

- Booster to swing temperature range
- Variable manual Vi
- Economizer : High capacity and high efficiency at wide temperature range

**SPECIAL CONTROL PANEL**

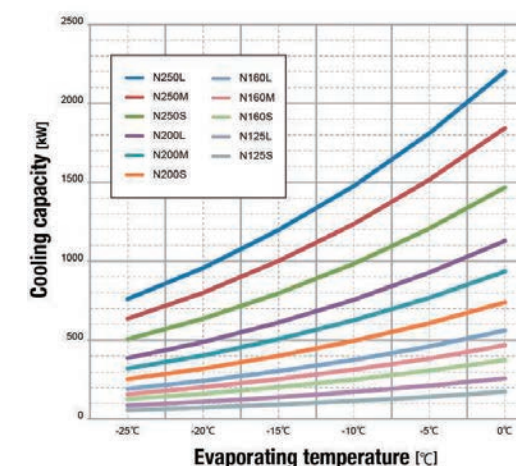
- New control panel (MYPRO TOUCH)
- Icon touch type on the screen
- Can be selected two screen type (standard : type M)

**HIGH RELIABILITY & QUALITY**

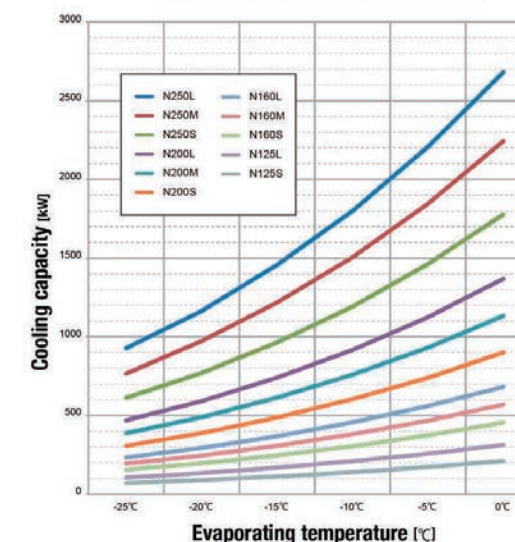
- High quality parts (oil pump, oil filter, oil separator)
- Reliable service by Mayekawa
- Robust packages

#### Performance charts

▶ 50Hz Condensing temperature:40°C Rotation speed:2950rpm  
Suction Superheat:0°C Liquid Subcooling:0°C



▶ 60Hz Condensing temperature:40°C Rotation speed:3550rpm  
Suction Superheat:0°C Liquid Subcooling:0°C



MAYEKAWA MFG.CO.,LTD.

[Inquirers]global@mayekawa.com



www.mayekawa.com



### Taiyo T-Type Cycle Power

#### Marine Energy-Saving Generator System



This device was developed to enable a generator to be driven by the main engine, and it has been widely adopted as a **“Shaft Generator”**, which significantly contributes to energy savings.

**TAIYO ELECTRIC CO., LTD**  
**www.taiyo-electric.co.jp**

### Taiyo Brushless AC Generator

*Efficient. Reliable. Engineered for the Sea.*



#### < Product Overview >

Type:	Self-ventilated
Excitation:	Brushless
Ratings:	Continuous Duty
Frequency:	50Hz / 60Hz
Poles:	4-pole
Insulation:	Class H
Coupling:	SAE adaptor & flexible coupling

**TAIYO ELECTRIC CO LTD**  
**www.taiyo-electric.co.jp**

## TAIYO Main Switch Board

Marine Power Distribution Panel



- 1) Divided BUS  
BUS is divided by using BUS-TIE (standard application).  
Complied to SOLAS rule.
- 2) BUS installation part  
BUS is installed lower part of MSB (up to 800kVA Gen.).  
Due to light weight and low gravity balance of MSB.

TAIYO ELECTRIC CO., LTD  
[www.taiyo-electric.co.jp](http://www.taiyo-electric.co.jp)

## Taiyo Marine Motor



General Purpose SHIP Motor

Type: Totally enclosed fan cooled Horizontal  
IM1001 IP-44 IC411 in IEC34

Voltage: AC440V 60Hz or AC380V 50Hz

Rating : Continuous

Bearing: Sealed ball bearings or  
regreasable Open ball bearings

Outline : IEC72, JEM1410  
Characteristics: JEM1277

TAIYO ELECTRIC CO., LTD  
[www.taiyo-electric.co.jp](http://www.taiyo-electric.co.jp)





# 14 Navigation Light >>> LED Navigation Light

NIPPON SENTO CO.,LTD.

## NEW LED NAVIGATION LIGHT UNDER DEVELOPMENT!



### FIRST STEPS INTO THE WORLD

★ Planned to be certified for both JG / MED

★ Designed to operate on both AC / DC power

★ Design patent pending



NIPPON SENTO CO.,LTD.

<http://www.nipponsento.co.jp>

# 15 LED Fishing Light >>> 800/600W Metal Halide Replacement LED Fishing Light

JAPANMAGNETS., INC

## 800W/600W/500W

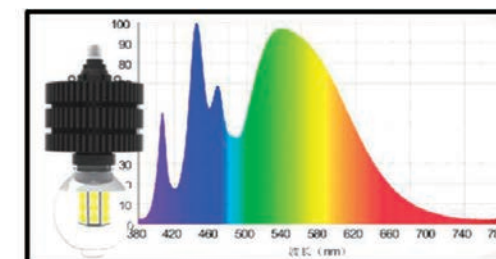
### Features and Benefits of the LED Fishing Light



While maintaining the same wavelength range as metal halide lamps, LED technology achieves significant energy savings. Instant ignition is possible, reducing fuel costs at departure and directly improving profitability. With a beam angle of 240° horizontally and 35° downward, the light covers a wide area for efficient fish attraction. Unlike metal halide lamps, it prevents burns and reduces eye strain for crew members on deck.

Emitting wavelengths from the blue spectrum to the ultraviolet range, the light penetrates up to around 80 meters deep. It effectively attracts squid (especially high-value Japanese flying squid), as well as mackerel, horse mackerel, and various other species.

The existing E39 socket can be reused. By simply replacing the ballast, you can switch to LED with minimal investment. For best results, installation is recommended at 5-6 meters above the water surface, arranged in two parallel rows along the sides of the vessel.



SPEC	800W	600W	500W
Input Voltage(AC/V)	222.7	100-22.7	222.7
W	800	600	500
LM	112915	88734	8000
beam range/angle	240° / - 35°		
Lamp Weight (kg)	3.5	2.7	2.5
Mounting bracket	E39		
Material	Borosilicate glass+Aluminum+Steel		
LED Color select	White • 470 • 520		
Life hours of LED(h)	30000	30000	30000



Japan Magnets., Inc.

Adress: 2F, Japan building 1-1646-2, Kamikawa, Suwa, Nagano, Japan

MAIL: [fisheries@japanmagnets.com](mailto:fisheries@japanmagnets.com)

TEL : +81-266-75 -1734 / FAX: +81-266-57-1530



# 15 LED Fishing Light >>>

## 5000W Underwater Fishing Light with a 30m Illumination Depth

JAPANMAGNETS., INC

### 5000W Underwater Fishing Light

An LED-converted fishing light, instantly switchable and usable up to 30 m depth (maximum 60 m). Commonly used in purse seine fishing, it features a 30 m cable extendable in 1 m units.

With high lumen output unmatched by deck-mounted LEDs or metal halide lamps, it attracts squid and fish from depths unreachable by surface lighting.

Available in adjustable colors (blue, green, etc.) for different species. Its rugged design ensures durability in seawater, freshwater, rivers, lakes, and brackish environments.



SPEC	DATA
Input Voltage	200-265 (50-60Hz)
W	5000
LM	520000
Lamp Weight (kg)	10
Gross Weight( kg)	19
Cable (m)	30
extension cord ¥/m	¥400
Cable Weight (kg/m)	0.2
Material	PC+Stainless Steel
Safe operating depth(m)	30
limit depth(m)	60
LED Color select	520.630.450.昼白色



Japan Magnets., Inc.

Adress: 2F, Japan building 1-1646-2, Kamikawa,  
Suwa, Nagano, Japan  
MAIL:fisheries@japanmagnets.com  
TEL : +81-266-75 -1734 / FAX: +81-266-57-1530

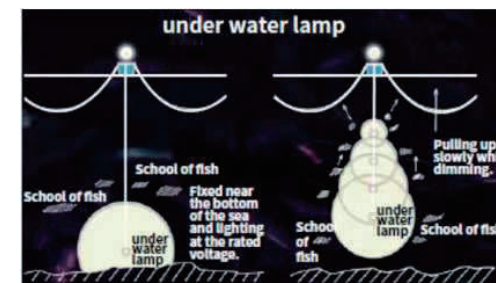
# 16 Underwater Light >>>

## Metal Halide Lamp "MW Series" / Halogen Lamp "QW Series"

Nichimo Co.,Ltd. Sendai Branch



### 【Fishing Equipment III】



### <The Under Water Light>

- ※ The under water lights are efficient compared to fish-attracting lights that are shone from the air. Therefore, they make it possible to effectively attract fish in deep water, which is not possible from the air.
- ※ The role of under water lights is to attract squid in deep water and to efficiently catch them by guiding the collected fish schools.

### <MW Series> Under Water Metal Halide Lamp



Specification	Specification	Specification	Specification
Lamp Wattage	2,350W	Lamp Wattage	2,750W
Lamp Voltage	135V	Lamp Voltage	235V
Lamp Current	19.0A	Lamp Current	13.8A
Total Luminous Flux	220,000lm	Total Luminous Flux	251,000lm
Water Depth	150m	Water Depth	150m

- ※ Numeric values are reference results of atmospheric lighting test
- ※ Color: Green or Blue (Blue only available in certain types)

### <Ballast> For The Under Water Metal Halide Lamp



Specification	
Input Voltage	220/240V
Frequency	60Hz
Input Current	26.7A/24.5A
Power Consumption	5,700W
Open Circuit Voltage	400V
Short Circuit Current	26.0A
Weight	26kg

Specification	
Input Voltage	220/240V
Frequency	60Hz
Input Current	22.8A/21.0A
Power Consumption	4,900W
Open Circuit Voltage	400V
Short Circuit Current	20.0A
Weight	26kg

Specification	
Input Voltage	220/240V
Frequency	60Hz
Input Current	45.0A/41.0A
Power Consumption	9,000W
Open Circuit Voltage	740V
Short Circuit Current	22.0A
Weight	62kg

- ※ We have a variety of ballasts in addition to these, so we can suggest the most suitable one.

### <QW Series> Under Water Halogen Lamp



Specification	Specification	Specification	Specification
	QWS1-100 QWS1-200		QWS2-100 QWS2-200
Rated Voltage	100V 200V	Rated Voltage	100V 200V
Recommended Input Voltage	120V 240V	Recommended Input Voltage	120V 240V
Rated Wattage	1,000W 3,000W	Rated Wattage	2,000W 2,000W
Water Depth	100m 100m	Water Depth	100m 100m

- ※ Easy to dim and increases efficiency of fishing when using dimmer
- ※ Quake-resistant filament prevents line breakage/blackening and last longer

### <Other>

- We also provide equipment for the high freshness treatment of squids.
- We also provide a variety of other fishing gears and equipment for fishing vessels.



NICHIMO CO., LTD.

Marine Business Team Sendai Branch

Azur Sendai 12F 1-1, Hon-cho, 1-chome, Aoba-ku,  
Sendai-city, Miyagi, 980-0014 Japan

TEL : +81-22-726-5091 E-mail:marine@nichimo.co.jp

Web : <https://www.nichimo.co.jp/>



# 17 Radar >>> Marine Radar JMR-5400 Series

Japan Radio Co.,Ltd.

## Marine Radar JMR-5400 Series

A marine radar system designed for fishing vessels, featuring dramatically improved short-range detection performance.



Discover the full capabilities online:  
<https://www.jrc.co.jp/en/product/jmr5400>

**JRC** Japan Radio Co., Ltd.

Japan Radio Co., Ltd.  
NAKANO CENTRAL PARK EAST, 10-1, Nakano 4-chome,  
Nakano-ku, Tokyo 164-8570, Japan  
Phone : +81-3-6832-1721 WEB: <https://www.jrc.co.jp/en/>

INQUIRY



# 18 Auto Pilot >>> Auto Pilot PR-3000

TOKYO KEIKI INC.

**TOKYO KEIKI**



For details

## AUTOPILOT PR-3000 Series

PR-3000 is the successor of PR-2000 which has had a remarkable sales record of over 17,000 units for coastal and fishing vessels. In addition to the various sophisticated information provided by new color LCD panel, we pursued enhanced safety, reliability, and maneuverability to this new model.

### Features

Reinforced information is displayed for further comfortable navigation

#### • User-friendly operation panel

While maintaining the usability of PR-2000, more intuitive maneuverability has been added to this new model.

#### • Flexibility suits you to applying new functions onboard

The flexible design of PR-3000 allows you to install the new function\* easily even after the PR-3000 is installed to your vessel.

\*ex. Adaptive control, ACE, and so on

#### • Graphical information supports safe voyage

Adoption of a LCD display enabling the display of various types of information for simple navigation more clearly.

#### • Alert function provides you advanced safety

In addition to the rudder follow-up failure or the abnormality of feedback from solenoid valve, an audible and visible alert for the abnormality of a heading sensor or another sensors will be issued.

#### • High reliability system design

Enhancing the redundancy by separating the function of system, and installing the function that monitors systems mutually at any time. These designs contribute to high reliability of our PR-3000.

#### • Various types of PR-3000 based on specification

Stand type, GYLOT type, console type, and other several types of PR-3000 we can provide based on your specification requirement. And it's possible to combine with PR-3000 and steering gear manufactured by other makers.



**TOKYO KEIKI**

TOKYO KEIKI INC. Marine Systems Company  
2-16-46, Minami-Kamata, Ohta-ku, Tokyo 144-8551 JAPAN  
Tel. +81-3-3737-8611 Fax. +81-3-3737-8663  
<https://www.tokyokeiki.jp/e/products/marine/>





## Gyrocompass TG-8100/8600

TG-8100/8600 is designed based on our previous TG model which has been installed on approximately 27,000 ships, keeping its high reliability, enhanced follow-up performance and interfacing features for equipment. The TG-8000 Series is designed for standard IMO ship application whereas the TG-8600 is designed for High-Speed Craft application.



### Suitable for speeds of up to 70knots ( TG-8600 )

- Fast follow-up rate ( maximum 75° /s )
- Fast serial data output ( IEC61162-2 )
- Interfaces with external heading sensor.
- Minimal system components for dual gyro system for space saving & installation cost.
- Startup-timer function
- Alert transfer feature for BAMS ( Bridge Alert Management System ) is equipped as standard.



For details



TG-8100 : IMO regulated vessels  
IMO A424 (XI) ISO 8728  
TG-8600 : High Speed Craft  
IMO A821 (19)  
ISO 16328 HSC2690/



**TOKYO KEIKI INC. Marine Systems Company**  
2-16-46, Minami-Kamata, Ohta-ku, Tokyo 144-8551 JAPAN  
Tel. +81-3-3737-8611 Fax. +81-3-3737-8663  
<https://www.tokyokeiki.jp/e/products/marine/>



## FIBER OPTIC GYROCOMPASS TF-900

### Designed for Standard IMO Ship

Complies with the latest international maritime requirements and major classification societies.

### List Control Does Not Apply

Even as a high performance system utilizing the latest inertial navigation technology, it is NOT subject to the List Control of Japan for export.

### Low Running Cost

The sensor unit contains NO movable parts meaning NO periodic overhaul. When compared to mechanical gyrocompass, Fiber Optic Gyrocompass contributes to running cost savings.

### Dual Gyro System

Dual gyrocompass configuration (including connection to Tokyo Keiki mechanical gyrocompass (TG series) is available.

### Compatible

The operating procedures and optional items (accessories) are the same as those of our conventional mechanical gyrocompass (TG-8000 series). Therefore the operator can feel at ease when using TF-900 exactly same as the conventional TG-8000 series mechanical gyrocompass.

### Complete After Sales Service

We provide a complete and worry free after service support backed by our technical expertise of fiber optic technologies and experience as long-established gyrocompass manufacturer.



For details



**TOKYO KEIKI INC. Marine Systems Company**  
2-16-46, Minami-Kamata, Ohta-ku, Tokyo 144-8551 JAPAN  
Tel. +81-3-3737-8611 Fax. +81-3-3737-8663  
<https://www.tokyokeiki.jp/e/products/marine/>



## TOKYO KEIKI

### GYROCOMPASS ACCESSORIES

Digital Repeater Compass  
【DR-110】



Repeater Compass

Digital Course Recorder  
【CR-100 / DCR-100】



Repeater Mounting  
MB Type

Rate Of Turn Indicator  
【ROTI-320】



Repeater Mounting  
BB Type



Repeater Stand BH Type



Azimuth Circle  
【GAC-198】



Universal Display  
【UD-10】



Digital Rate Of Turn Indicator  
【DR-120】



Universal Display  
【UD-100】



For details



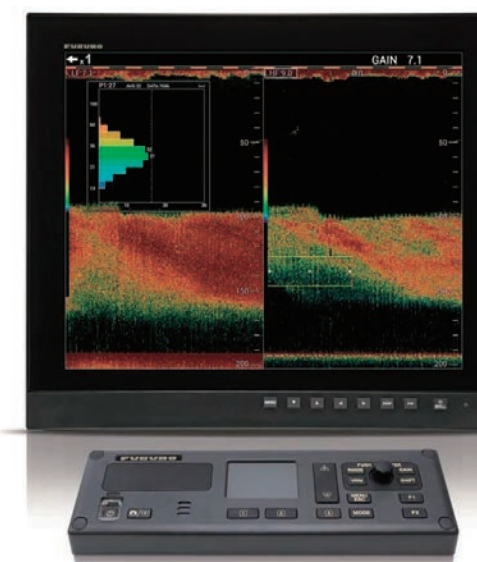
## TOKYO KEIKI

**TOKYO KEIKI INC. Marine Systems Company**  
2-16-46, Minami-Kamata, Ohta-ku, Tokyo 144-8551 JAPAN  
Tel. +81-3-3737-8611 Fax. +81-3-3737-8663  
<https://www.tokyokeiki.jp/e/products/marine/>

## FURUNO

### TruEcho CHIRP WITH UNIQUE FISH SIZE INDICATOR

Model **FCV-1900G**

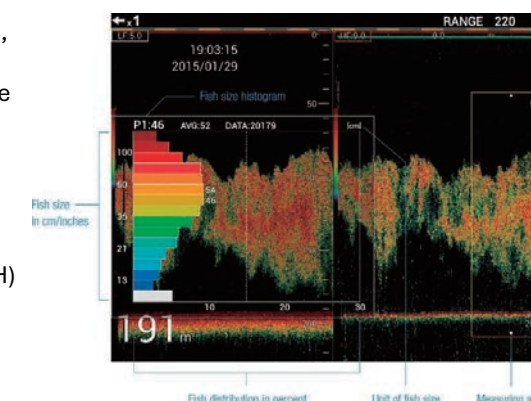


More details on  
[www.furuno.com](http://www.furuno.com)



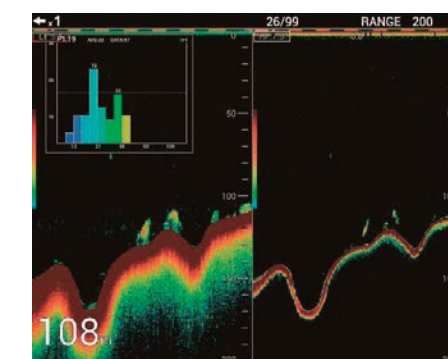
### Identify size and distribution with the fish size graph

With a quick glance at the simple and efficient graph, you can get all the information you need to identify fish size and distribution. Once you know the fish size and its distribution, you can use this information to estimate the species and whether it's a viable target or not. Together with the TruEcho CHIRP™ technology. The FCV-1900G allows you to make an accurate decision.  
(Recommended transducers: CM265LH or CM599LH)



### Accurately judge which target to go after

Experience incredibly accurate echoes, even in deep waters thanks to our TruEcho CHIRP™ technology. The FCV-1900G is well suited for trawlers where accurate and reliable information about the sea bottom is necessary. Utilizing the fish size graph, choosing the right target is simple, allowing you to maximize your time at sea, while avoiding unnecessary bycatches.



**FURUNO ELECTRIC CO., LTD.**

Find your local contact point





# 21 Sonar >>> Full Circle Color Scanning Sonar FSV-25 MARK-2

FURUNO ELECTRIC CO.,LTD.

## FURUNO

### FULL-CIRCLE COLOR SCANNING SONAR

Model **FSV-25 MARK-2**



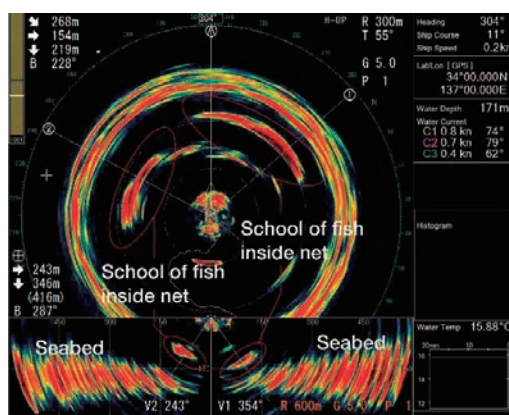
More details on  
[www.furuno.com](http://www.furuno.com)



## Extended detection range to identify schools of fish at great distances

Thanks to recent advancements in low-frequency transducer elements, signal processing and increased transmission power, the detection range has been greatly improved (by approx. 30% compared to the previous model) with the FSV-25MARK-2 series. You can instantly spot and follow schools of fish from several kilometers away.

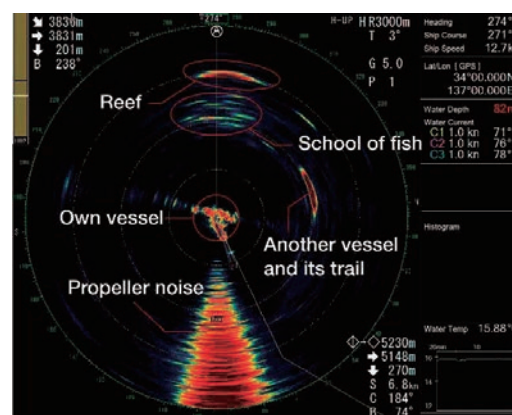
### ■ Close-range detection



【300 m range】

Two schools of fish can be seen right after the purse-line has been pulled and the net has been closed.

### ■ Long-range detection



【3000 m range】

A school of fish 2000 m ahead. The fish school appears to swim close to a reef.

**FURUNO ELECTRIC CO., LTD.**

Find your local contact point



# 22 Current Indicator >>> Doppler Current Meter JLN-652

Japan Radio Co.,Ltd.

## Doppler Current Meter JLN-652

The JLN-652 Doppler current meter integrates a compelling combination of function and features, packed into a compact space-saving design, enabling quick and accurate acquisition of speed and tidal current data.



Discover the full capabilities online:  
<https://www.jrc.co.jp/en/product/jln652>



**Japan Radio Co., Ltd.**

Japan Radio Co., Ltd.

NAKANO CENTRAL PARK EAST,10-1, Nakano 4-chome,  
Nakano-ku, Tokyo 164-8570, Japan

Phone : +81-3-6832-1721 WEB: <https://www.jrc.co.jp/en/>

INQUIRY





## AIS JHS-183



Captures operational information of nearby vessels to support safe navigation in surrounding waters.

JHS-183	
IMO Type Approved	✓
Frequency	156.025-162.025 MHz, default channels 161.975 MHz, 162.025 MHz, DSC (receive only): 156.525 MHz
Frequency accuracy	Within $\pm 3 \times 10^{-6}$
Channel spacing	25 kHz
Type of emission	AIS: G1D (F1D)
Type of modulation	AIS: GMSK
Power	19-35V DC (optional AC/DC power supply unit 100-220V AC)
Consumption	Up to 3.0A (transmitting), up to 1.0A (receiving)

Discover the full capabilities online: <https://www.jrc.co.jp/en/product/jhs183>



**Japan Radio Co., Ltd.**  
NAKANO CENTRAL PARK EAST,10-1, Nakano 4-chome,  
Nakano-ku, Tokyo 164-8570, Japan  
Phone : +81-3-6832-1721 WEB: <https://www.jrc.co.jp/en/>

INQUIRY



## 406MHz Satellite Emergency Position Indicating Radio Beacon Tron 60AIS

### 406MHz Satellite Emergency Position Indicating Radio Beacon Tron 60AIS



Tested for compliance with international standard IEC 61097-2 Ed.4 (April 2021), this system ensures reliable performance and operation.

Equipped with AIS homing technology for rapid location identification and compatible with multi-GNSS systems.

Features infrared LED lights for SAR operations, optimized for use with night vision devices.

General Specification	
Antenna	406 MHz Cospas-Sart Transmitter: Omni directional 121.5 MHz Homing Transmitter: Omni directional AIS Transmitter: Omni directional
GNSS Receiver	PCB inverted-F antenna
Battery	Type: Plithium metal Voltage: 12 VDC/2.9 Ah (term of validity: 10 years)
Release Sensor	Made by Hammer (term of validity: 2 year)

Discover the full capabilities online:  
<https://www.jrc.co.jp/en/product/tron60ais>



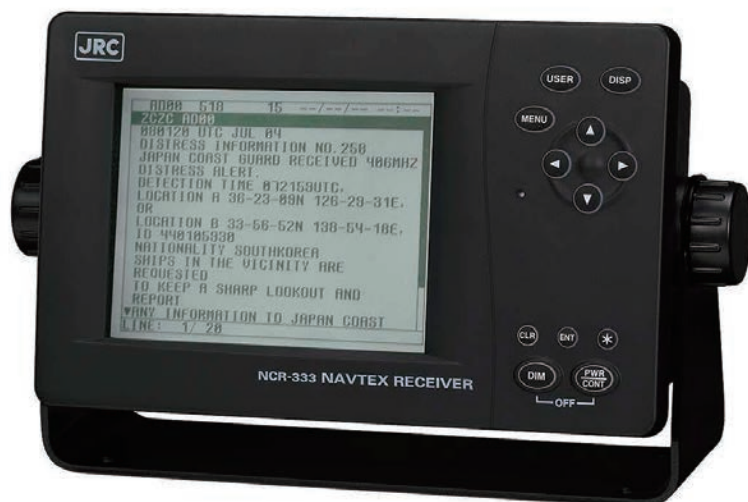
**Japan Radio Co., Ltd.**  
NAKANO CENTRAL PARK EAST,10-1, Nakano 4-chome,  
Nakano-ku, Tokyo 164-8570, Japan  
Phone : +81-3-6832-1721 WEB: <https://www.jrc.co.jp/en/>

INQUIRY





## NAVTEX Receiver for GMDSS NCR-333



Simultaneously receives navigational warnings, weather alerts, SAR information, and other broadcasts transmitted on three different frequencies.

Users can select preferred stations and message types through programmable settings for tailored reception.

Specifications / Components	
Receiving frequency	490kHz, 518kHz, 4209.5kHz
Receiving mode	F1B NAVTEX broadcast
Sensitivity	CER better than 1x10-2 at 1uV / input to 50Ω antenna
Frequency stability	+/-15Hz
Display	5.7-inch Black & White LCD
Received message storage function	Each Channels : 200 messages / Storage length : 70hours
Interface for external units	Serial Interface : 2ports (For Printer and Integrated Navigation System)
Power supply	12V - 24V DC

Discover the full capabilities online: <https://www.jrc.co.jp/en/product/ncr333>



Japan Radio Co., Ltd.  
NAKANO CENTRAL PARK EAST,10-1, Nakano 4-chome,  
Nakano-ku, Tokyo 164-8570, Japan  
Phone : +81-3-6832-1721 WEB: <https://www.jrc.co.jp/en/>

INQUIRY



## Radar Transponder Tron SART20



Designed specifically for search and rescue (SAR) operations, this radar transponder features a compact and lightweight design for easy portability.

General Specification	
Weight	450 g
Material housing	Polycarbonate with 10 % glass fibre
Frequency	X-band (3 cm) (9.2~.5 GHz)
Radiated power	> 400 mW EIRP(+26 dBm)
Sweep type	<ul style="list-style-type: none"> <li>•12 sweep sawtooth type</li> <li>•Forward 7.5 μs±1 μs</li> <li>•Return 0.4 μs±0.1 μs starts with return sweep</li> </ul>
Receive sensitivity	Better than -50 dBm e.r.s
Response delay	Max 0.5 μs
Antenna pattern	<ul style="list-style-type: none"> <li>•Horizontal polarization</li> <li>•Omnidirectional radiation in the horizontal plane</li> <li>•Greater than ±2.5 degrees elevation angle in the vertical plane</li> </ul>

Discover the full capabilities online:  
<https://www.jrc.co.jp/en/product/tronsart20>



Japan Radio Co., Ltd.  
NAKANO CENTRAL PARK EAST,10-1, Nakano 4-chome,  
Nakano-ku, Tokyo 164-8570, Japan  
Phone : +81-3-6832-1721 WEB: <https://www.jrc.co.jp/en/>

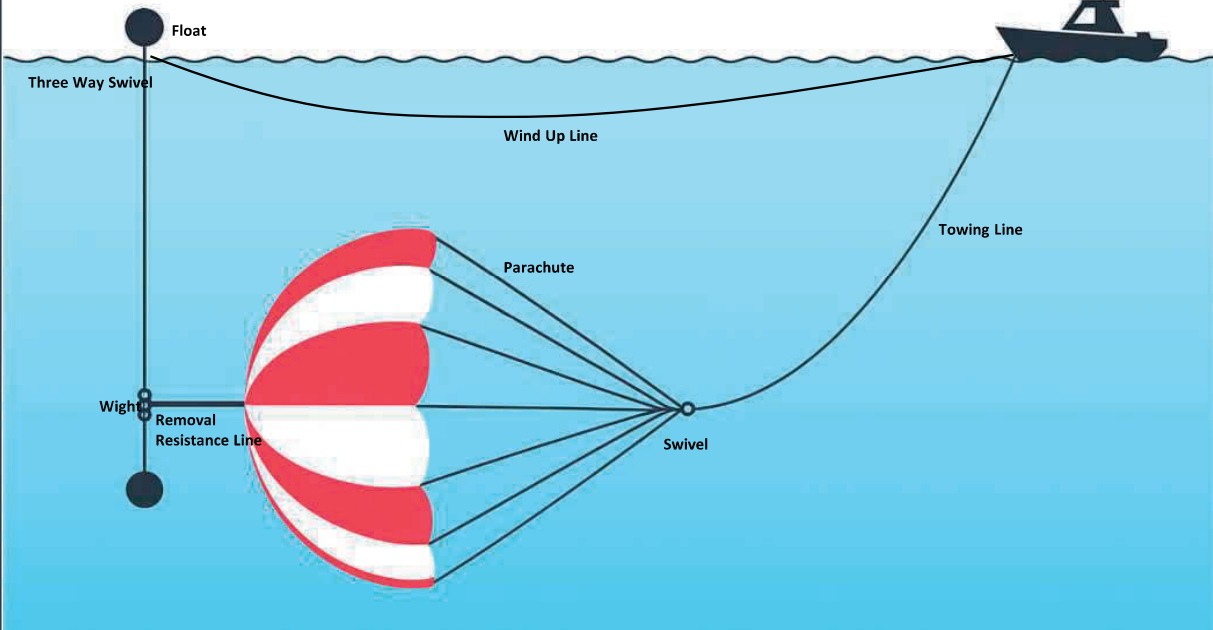
INQUIRY





【Fishing Equipment II】

Parachute Anchor <PARA ANCHOR>



Para anchors are parachute-type devices that reduce drifting by keeping the bow facing the wind, Improving steering stability. We offer various models for different uses, including the K-type approved for rough weather, the FS type for leisure and small boat, the versatile FM type for coastal vessels, and the durable FG type with high deployment performance.

PARA ANCHOR FOR THE FISHING

Type	Diameter (m)	Vessel Size (Metric Ton)	Towing Rope (mm)	Wind Up Rope (mm)
12-FG	3.8	1 (Under)	24	16
16-FG	5.0	1	24	16
18-FG	5.5	2	24	16
22-FG	6.6	2-4	24	16
24-FG	7.2	3-5	24	16
26-FG	8.5	4-6	30	16
32-FG	9.6	5-7	30	16
36-FG	11.0	6-8	30	18
42-FG	12.5	7-10	35	18
50-FG	15.0	10-15	35	18
60-FG	18.0	15-20	40	20
70-FG	21.0	20-30	40	20
80-FG	24.0	30-70	45	24
90-FG	27.0	70-99	45	24
100-FG	30.0	90-200	50	24

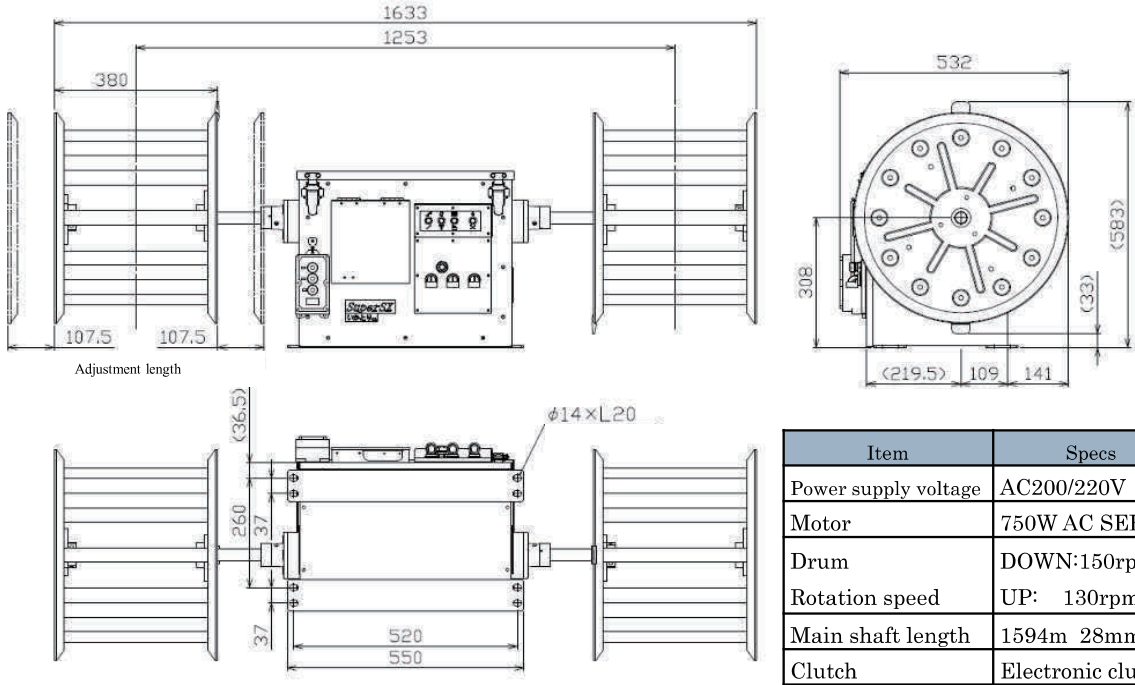
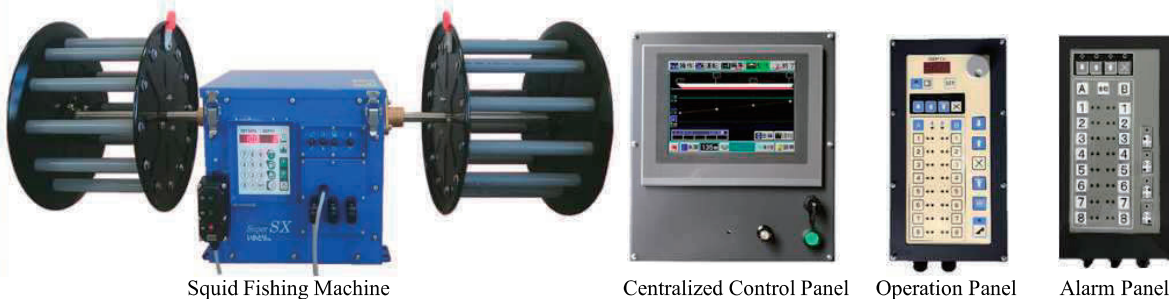
PARA ANCHOR FOR THE STORMY WEATHER

Type	Diameter (m)	Vessel Size (Metric Ton)	Towing Rope (mm)	Wind Up Rope (mm)
12-FK	3.8	5 (Under)	24	16
16-FK	5.0	10	24	16
18-FK	5.5	20	24	16
22-FK	6.6	30	24	16
24-FK	7.2	40	24	16
28-FK	8.5	50	30	16
32-FK	9.6	60	30	16
36-FK	11.0	70	30	18
42-FK	12.5	90	35	18
50-FK	15.0	150	35	18
60-FK	18.0	250	40	20
70-FK	21.0	300	40	20
80-FK	24.0	500	45	24

Please feel free to contact us regarding size selection or specifications.

【Fishing Equipment I】

<Super SE-SX Series> Fully Automatic Squid Fishing Machine



<Features>

- **The Super SE-SX controls and adjusts the wire tension precisely to prevent it from going slack**  
While hauling and stopping the wire repeatedly, its computer system monitors the changing load on the wire and adjusts its tension swiftly with its AC servo motor. The wire is kept straight and it prevents squid from getting off the hook.  
Its precise tension control also allows the wire to shift its speed from its high to the maximum smoothly.
- **The Super SE-SX enables you to customize and optimize your jigging settings**  
Its round drums enable users to flexibly customize their jigging settings and types to optimize their wire and jigging operations.
- **The Super SE-SX displays real-time load on the wire**  
The system shows real-time wire load in three shifting colors and kilograms.  
It allows users to easily recognize if and when squid is caught on hook and in what water depth.
- **The Super SE-SX’s drums slide sideways 215mm to avoid tangling**  
The drums slide sideways 215mm, the largest distance in the industry. It avoids hooks from piling and tangling on the drums.
- **The Super SE-SX keeps the wire taut with its spring tensioner**  
Its spring tensioner keeps the wire straight and taut and avoids it from going slack, realizing precise jigging movements.
- **The Super SE-SX introduces the waterproof alarm operation panel**  
The system introduces the industry’s first waterproof alarm operation panel. When installed in the packing area, users can keep monitoring the wire load and other operation parameters while packing, and respond quickly to any irregularities shown on the panel.



# 26 Squid Jigging Machine Automatic Squid Fishing Machine MY-8

TOWA DENKI SEISAKUSHO, Inc.

With a new crystal control panel, you can enjoy an even clearer display and improved functionality.

## New Automatic Squid Fishing Machine

High Quality Squid Fishing Machine System

# MY-8

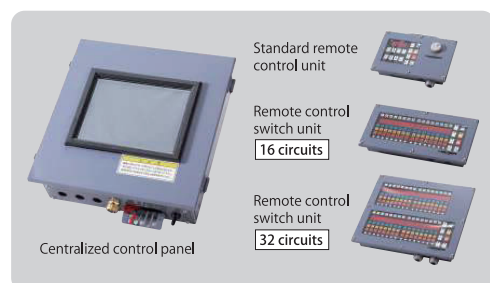
The product is fully patented.

A new version of the squid fishing machine with the popular crystal control panel and increased functionality

It is a simple fishing machine with its focus firmly on functionality.

It is equipped with our popular crystal control panel.

The control panel can monitor up to 64 fishing machines in addition to being capable of self-diagnosing the system in a short amount of time.

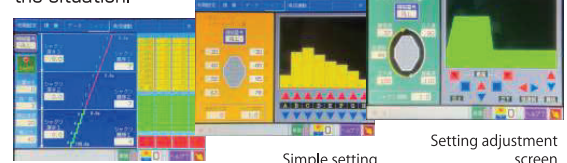


The new crystal control panel features a display surface that is easier to see, while it also offers improved functionality.



## You can enjoy diverse types of jigging

There are many ways of jigging and, with this new machine that allows multiple settings, you can enjoy fishing squids the way you like depending on the situation.



## A panel with a display surface with icons

The display of the new control panel that features icons allows you to work instantly and instinctively and, as a result, you can work much more efficiently.

HAMADE

Hamade Squid Fishing Machine has won the Robot Award of the Year in 2006.

Automatic Squid Jigging/Fishing Machine



EX-2N  
A day and night all-round player was born. The latest technology and high power realize smooth and sharp jigging.

New Model Automatic Squid Jigging/Fishing Machine



MY-18  
New upgraded model with the reputable LCD control panel and the wide variety of functions.

Other models with different specifications are also available. Please visit our website for more details.

Manufacturer and distributor

HAMADE Towa Denki Seisakusho, Inc.

6-29 Yoshikawa-cho, Hakodate-city, Hokkaido 040-0077  
PHONE +81-138-41-4410 FAX +81-138-41-2867

<http://towa-denki.co.jp/en/>

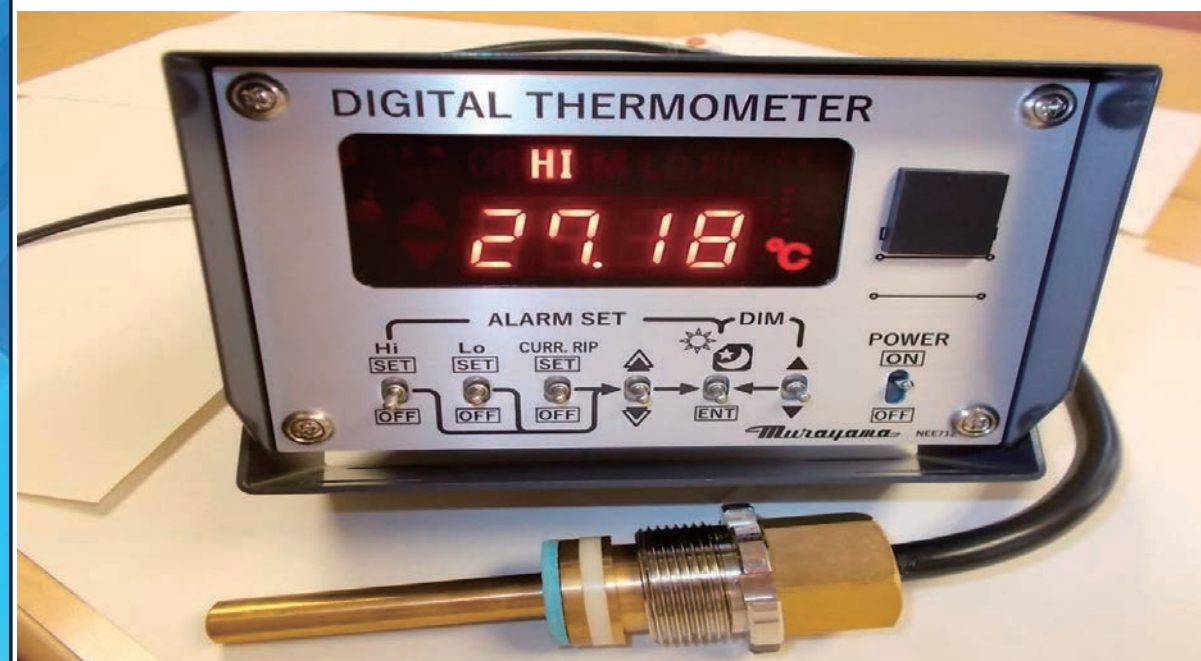


# 27 Thermometer >>> DSN-2000 DIGITAL THERMOMETER for SEA WATER

MURAYAMA DENKI LTD.



## DSN-2000 DIGITAL THERMOMETER for SEA WATER



## OUTLINE

DSN-2000 has the functions of higher/lower-limits alarms & current rip alarm which are essential to the discovery of good fishing grounds. By the 0.01°C of high resolution this thermometer can detect a little change of temperature, and the high precision (Tolerance: less than  $\pm 0.1^\circ\text{C}$ ) of temperature measurement. Temperature data can be delivered to a navigation device in NMEA-0183 as well.

## FEATURES

- 0.01°C High Resolution ○Current RIP Alarm
- For Proper Temp Area Discovery and Preservation ○LED Display with Dimmer
- NMEA-0183 Output (Maximum 2 Output) ○Measurement Scale -5~+50°C

For more information → <https://www.murayama-denki.co.jp>



Murayama Denki Ltd

1-25-7, Hashimotodai, Midori-ku, Sagami-hara-shi,  
Kanagawa-ken, 252-0132, JAPAN  
TEL: +81-42-703-3905  
MAIL: [info@murayama-denki.co.jp](mailto:info@murayama-denki.co.jp)





## MF/HF Radio Equipment JSS-2150/2250/2500



This MF/HF radio equipment is compliant with GMDSS Class A DSC. It supports continuous operation at maximum rated output across all communication modes, not limited to voice transmission.

### Specs

Model	JSS-2150	JSS-2250	JSS-2500
IMO type approved	✓		
Output power	150W	250W	500W
Regurations	IMO A.806(19), A.694(17), MSC68(68), MSC/Circ.862, IEC 60945 Ed.4 2002-08		
Transmission frequency	1605.0 ~ 27500.0kHz(100Hz steps)		
Reception frequency	90.0 ~ 29999.9kHz(100Hz steps)		
Frequency stability	Within ±10Hz		
DSC watch keeping frequency	2187.5kHz, 4207.5kHz, 6312.0kHz, 8414.5kHz, 12577.0kHz, 16804.5kHz		
Type of emission	J3E, F1B, A1A, H2B, J2D, H3E(receiving only)		
User programmable channel	Up to 400 (20 channels x 20 groups)		
ITU preset channel	1722ch		

Discover the full capabilities online: <https://www.jrc.co.jp/en/product/jss2150>



Japan Radio Co., Ltd.  
NAKANO CENTRAL PARK EAST,10-1, Nakano 4-chome,  
Nakano-ku, Tokyo 164-8570, Japan  
Phone : +81-3-6832-1721 WEB: <https://www.jrc.co.jp/en/>



## Marine VHF Radiotelephone JHS-800S



the world's first Class A DSC-compliant international VHF radiotelephone to feature a 5-inch high-brightness color LCD touchscreen, offering superior visibility and intuitive operation.

### Specs

Model	JHS-800S
Standard	IMO resolution A.694 ( 17 ) ( 1991 ) IMO resolution A.803 ( 19 ) ( 1995 ) IMO resolution MSC.68 ( 68 ) ( 1997 ) IMO MSC / Circ.862 ( 1998 ) IEC 60945 Ed.4.0 ( 2002-08 )
Display	5 inch TFT color LCD,800 × 480 dots ( WVGA ),Brightness: 1000 cd/m2
Communication modes	Simplex and semi-duplex press talk system
Transmission frequency	Simplex / semi-duplex : 155.000 - 163.500 MHz
Reception frequency	Simplex / semi-duplex : 155.000 - 163.500 MHz
Antenna output power	6 - 25 W ( when reducing : 0.5 - 1 W )
Modulation method	FM / FSK
Type of emission	Radiotelephone communications : F3E / G3E DSC / ATIS : F2B / G2B
Channel spacing	25 kHz
Frequency accuracy	±10 × 10-6 or less

Discover the full capabilities online: <https://www.jrc.co.jp/en/product/jhs800s>

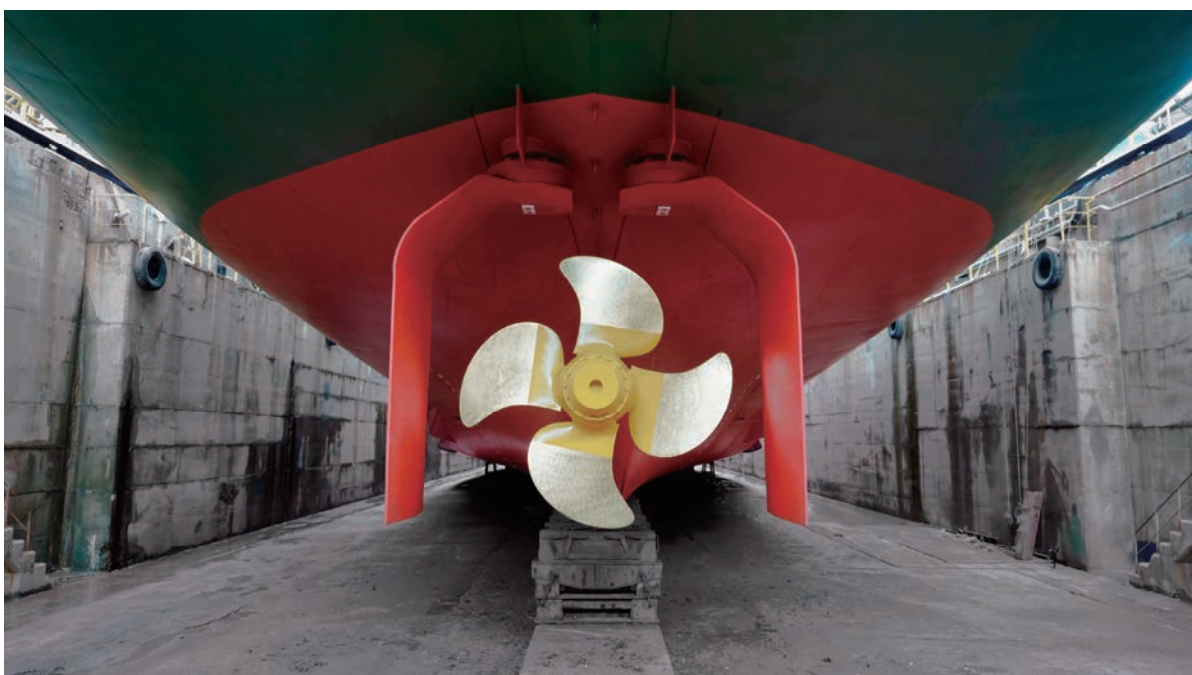


Japan Radio Co., Ltd.  
NAKANO CENTRAL PARK EAST,10-1, Nakano 4-chome,  
Nakano-ku, Tokyo 164-8570, Japan  
Phone : +81-3-6832-1721 WEB: <https://www.jrc.co.jp/en/>





## GATE RUDDER SYSTEM by KAMOME PROPELLER



### Steer to the new era

Completely new concept rudder creating the thrust  
The GATE RUDDER® consists of two uniquely shaped rudders placed in parallel either side of the propeller instead of placing behind the propeller, which reduces resistance of rudder and creates thrust to improve the energy consumption.

### ADVANTAGE

- Confirming 14% Energy Saving on actual ship.
- Excellent course keeping and turning performance.
- Less noise and Underwater Radiated Noise (URN).



### Kamome Propeller Co., Ltd.

690 Kamiyabe-cho, Totsuka-ku, Yokohama 245-8542 Japan  
Tel: +81-45-811-2461  
Contact Foam:  
<https://www.kamomepropeller.co.jp/en/contact/form/>

## KAMOME K-7 RUDDER (High Lift Flap Rudder)



### Superiority

#### High lift

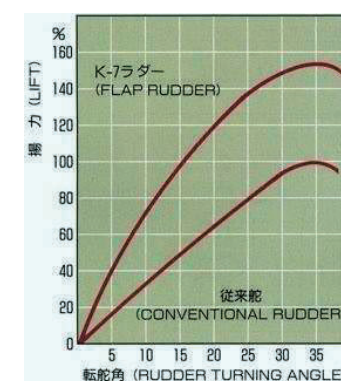
Comparing conventional rudder, K-7 rudder could obtain 50% higher lift especially when the ship runs at low speed.

#### High stability

Due to the reaction force of flap during sharp turning, recovery of trim could be achieved. And also due to the high effect of flap at low speed of the ship, K-7 rudder is suitable for operation of ship in narrow water way.

#### Simple Structure and Easy Maintenance

The moving parts of the rudder are simple structure made of durable material, which makes maintenance work easier.



details



### Kamome Propeller Co., Ltd.

690 Kamiyabe-cho, Totsuka-ku, Yokohama 245-8542 Japan  
Tel: +81-45-811-2461  
Contact Foam:  
<https://www.kamomepropeller.co.jp/en/contact/form/>





**KAMOME REACTION AND BULB RUDDER** is an energy-saving rudder designed to improve propulsion efficiency by combining a reaction rudder—with its upper and lower leading edges curved to generate rudder thrust from the propeller's rotational flow—and a spindle-shaped rudder bulb designed to closely approach the propeller hub. By appropriately curving the upper and lower leading edges of the rudder blade, rudder resistance is reduced, and the spindle-shaped rudder bulb effectively suppresses hub vortices generated by the propeller to the utmost extent. This optimal combination forms the design concept of the **KAMOME REACTION AND BULB RUDDER**.

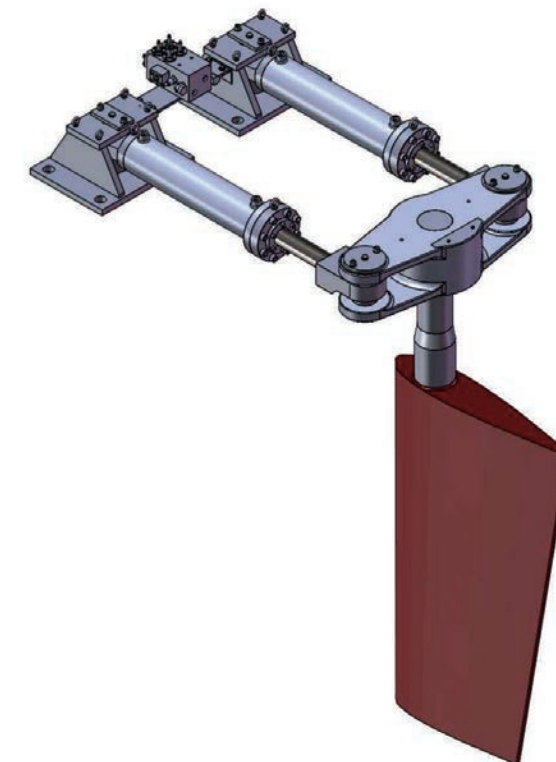


## Kamome Propeller Co., Ltd.

690 Kamiyabe-cho, Totsuka-ku, Yokohama 245-8542 Japan  
Tel: +81-45-811-2461  
Contact Form:  
<https://www.kamomepropeller.co.jp/en/contact/form/>



## Electro-Hydraulic Steering Gear



### Features

#### •Lightweight and compact power unit

By adopting hydraulic equipment from Tokyo Keiki, which specializes in electro-hydro technology, a lightweight and compact power unit has been realized.

#### •Electromagnetic valve with excellent quietness

The adoption of a high-performance wet-type solenoid valve achieves low noise and easy maintenance.



## TOKYO KEIKI INC.

### Marine Systems Company

2-16-46, Minami-Kamata, Ohta-ku, Tokyo 144-8551 JAPAN  
Tel. +81-3-3737-8611 Fax. +81-3-3737-8663  
<https://www.tokyokeiki.jp/e/products/marine/>





**High-performance antifoulings  
improve the vessel's fuel efficiency**



**SEAFLO NEO  
SEA GRANDPRIX  
SEA PREMIER**

CHUGOKU's antifoulings are well-designed to achieve long-term antifouling protection, fuel savings and outstanding performance during extended static periods, maintaining the active surface layer by straight line polishing.



<https://www.cmp-chugoku.com/global.html>

HIEN ELECTRIC INDUSTRIES LTD.

## Marine Electrical cable

Our cables are made with a focus on work safety

**Toughness  
Cable**

Flamme  
retardant

Corrosion  
resistant

Vibration  
resistant



Structure



- Conductor
- EP rubber insulation (identified)
- Cabling (with fillers)
- Tape
- PVC or polyolefin sheath
- Steel-wire braid
- Protect Paint



In small ships, constant vibration can damage cables. We provide special coatings upon request.

### Product Lineup



Halogen-free, flame-retardant cables



Control equipment cables



Telephone cables



Electric wires for control equipment



LAN cables  
Other cables with steel-wire braid sheathing

Feel free to contact us at the following address

HIEN ELECTRIC INDUSTRIES, LTD.

URL: <https://www.hien.co.jp/english/index.html>

Email: [koide@hien.co.jp](mailto:koide@hien.co.jp)

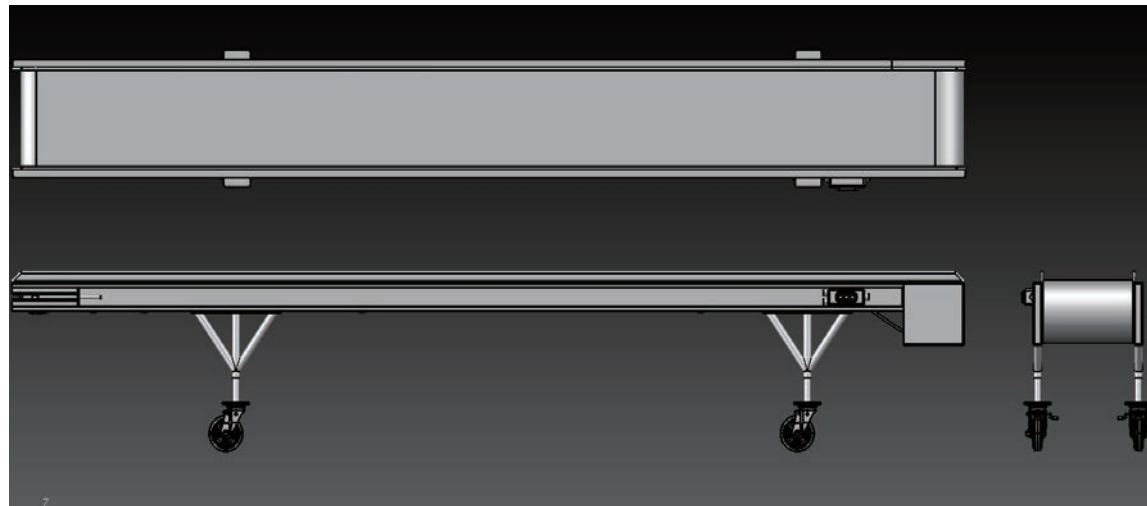
Phone: +81-6-6226-1501

To: Koide Shungo (Mr.)



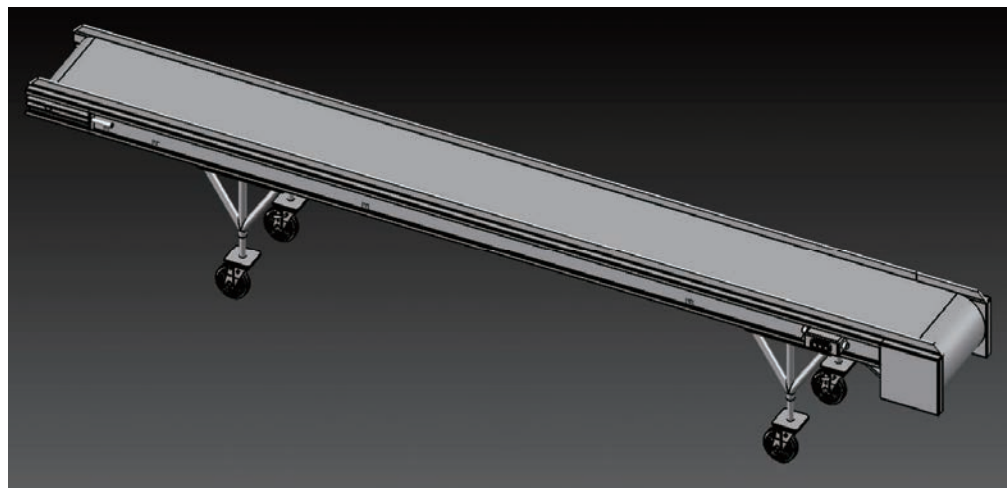


## Frozen tray conveyor



### 【Features】

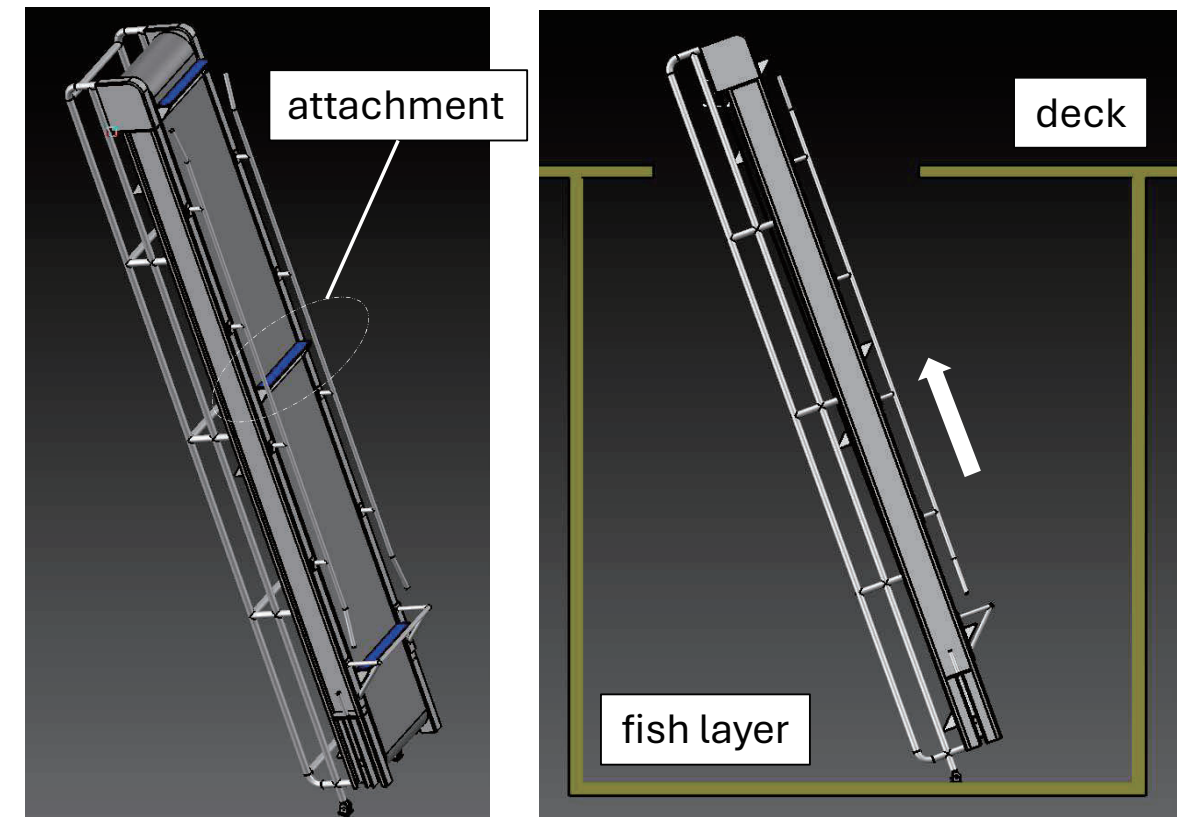
- Transporting frozen trays from the processing plant to the freezing room.
- It comes with casters so it can be moved depending on the work situation.
- ✕ Cannot be installed in locations below  $-30^{\circ}\text{C}$ .



<We also manufacture various types of conveyors according to your requests>

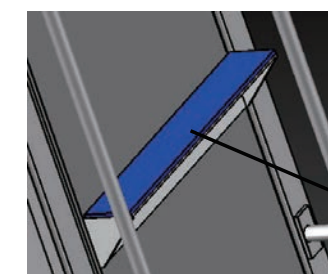
Homepage QR code→

## Vertical lift conveyor



### 【Features】

- Transport the boxed products from the fish layer to the deck.
- ✕ Conveyance capacity varies depending on various conditions, so please check.



- The attachment has rubber.

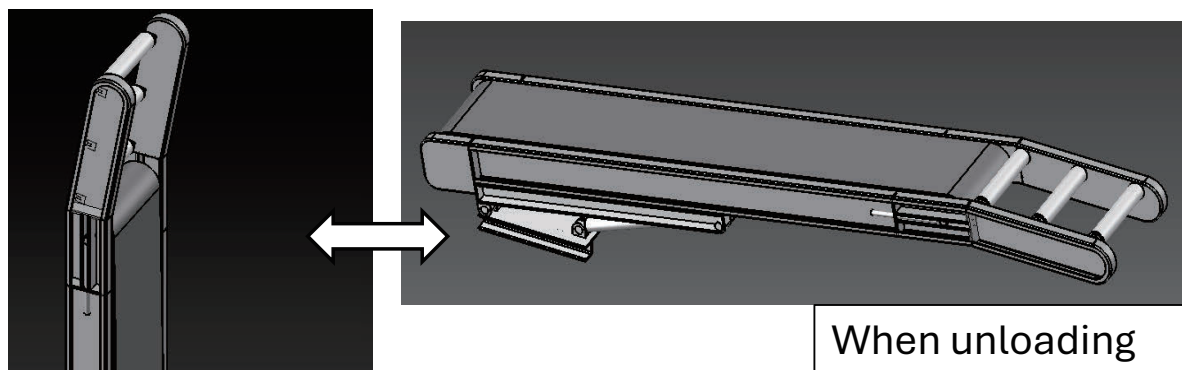
rubber

<We also manufacture various types of conveyors according to your requests>

Homepage QR code→



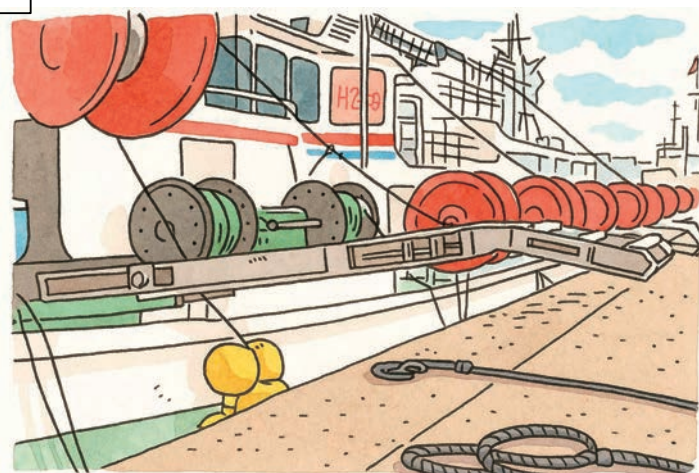
### Hull-mounted unloading conveyor



#### 【Features】

- The angle of the conveyor can be adjusted to 7 levels according to the height of the quay.
- After unloading, it can be stored in the hull.

When stored



~Image during unloading~

<We also manufacture various types of conveyors according to your requests>

### Inflatable PDF for Commercial use TK-2720S



- Approved by the Ministry of Land, Infrastructure, Transport and Tourism, Japan
- Complies with the Seafarers' Labor Safety and Health Regulations
- Suitable for constant wear on small vessels (Life jacket classification: Type A)
- Adjustable free size (maximum waist circumference: 110 cm)
- V-shaped back belt design reduces interference with full-harness safety belt lanyards
- Model with both water-activated and manual inflation mechanisms

#### Misoperation Prevention Pull Cord



The pull handle can be securely fixed in a desired position to prevent accidental activation.

#### Dual Indicators & Inspection Window



Instantly check the status of the inflation system at a glance.



#### Specifications

Model	TK-2720S
JG Approval Number	No. 5558
Color Options	Orange, Red, Navy
Weight	690g
Buoyancy	7.5 kg or more (maintained for 24hours)
Replacement Cylinder Kit	18UML Elite KIT



# 34 Lifesaving Equipment Inherently Buoyant Lifejacket TKW-3B

Takashina Life Preservers Co., Ltd.



## Inherently Buoyant Lifejacket TKW-3B



- Approved by the Ministry of Land, Infrastructure, Transport and Tourism, Japan
- Complies with the Seafarers' Labor Safety and Health Regulations
- Suitable for constant wear on small vessels (Type A classification of life jackets)



Specifications	
Model	TKW-3B
JG Approval Number	No.5259
Color Options	Orange, Yellow
Weight	510g
Buoyancy	7.5 kg or more / 24 hours
Size Adjustment Belt	Included
Back Design	Open back
Compatibility with Full-Harness Safety Belt:	Compatible



**Takashina Life Preservers Co., Ltd.**

1-1-30, Kuboyoshi, Naniwa-ku, Osaka-shi, 5560028, Osaka, Japan  
TEL: +81 6 6567 1141 FAX: +81 6 6568 7528 <https://tlpc.co.jp/>

# 35 Fishing Equipment >>> Squid Hook Assembly

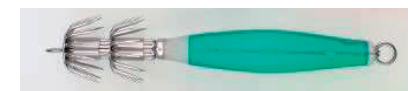
Nichimo Co., Ltd. Sendai Branch



## Fishing Gear and Equipment for the Squid Fishing

### 【Fishing Gear】

#### <Soft Series>



Color : Blue, Pink, Green, Light Green, Dark Green, Purple  
Needle Size : 0.9mm, 1.0mm, 1.17mm, 1.3mm, 1.4mm, 1.5mm  
Case : Soft Type

#### <Hard Series>



Color : Blue, Pink, Green, Light Green, Dark Green, Purple  
Needle Size : 0.9mm, 1.0mm, 1.17mm, 1.3mm, 1.4mm, 1.5mm  
Case : Hard Type

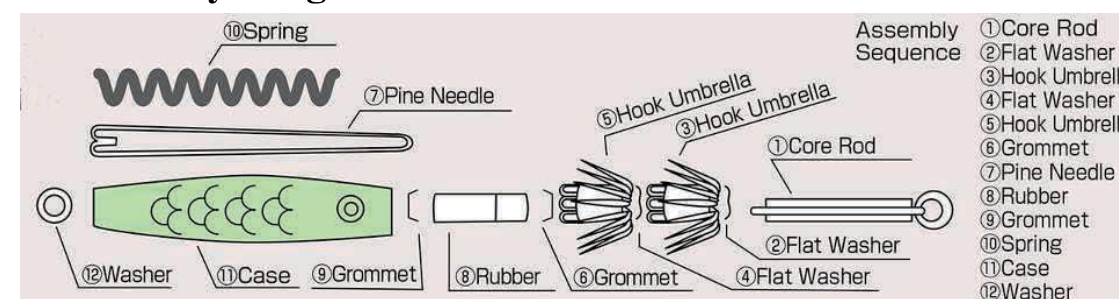
Soft and Hard Series are popular in the water of many seas,  
e.g. Argentina and North Pacific Ocean.

#### <Octagonal Casting Hook>



Size : 150mm, 170mm, 200mm, 220mm  
Needle Size : 1.4mm, 1.5mm  
Material : Steel (Galvanized)

#### <Assembly Diagram>



※Parts # ⑧ : Pipe type also available

#### <New Topic>

We are currently developing biodegradable squid hooks to reduce the impact on the marine environment and will soon be releasing these fishing gear products.







# Online Catalog Available

RENEWAL

## FISHING VESSEL EQUIPMENT LIST

JSMEA Japan Ship Machinery and Equipment Association

Products and Services Highlights Media and Publication JSMEA NEWS Outline of JSMEA

Fishing Vessel Equipment List

Full Part Machinery Part Electric Part Fishing Gear

Category	Item	Type	Company Name	Model
UR CONDITIONING & VENTILATION	Mechanical ventilation fans	Axial flow, Centrifugal type	Takao, AKASAKA CO., LTD.	
CARGO SYSTEM	Cargo pump	Screw	Nissens Pumps Mfg. Co., Ltd.	
DECK MACHINERY	Hose handling crane	Electro hydraulic	MIST INC.	
WIRE FIGHTING SYSTEM	Emergency fire pump	Centrifugal, Electric motor driven	TERUCHI MACHINERY WORKS LTD.	

NEW

## PRODUCT LIST FOR SQUID JIGGING VESSELS

Low Running Cost & Environmentally Friendly Diesel Engine

**AKASAKA DIESELS LIMITED**

**Outline of Company**  
Akasaka Diesels Limited is a leading manufacturer of marine ship propulsion in Japan. We have 115 years history. Akasaka Diesels have grown up together with the development of Japanese domestic fishery industry, and its products coverage to even merchant vessels. Today its products are known by its high reliability and fine based on authentic technology succeeded over generations.

**AX series is our latest model & suitable for fishing vessels.**

Model	Output (kW)	Eng. speed (RPM)	Bore (mm)	Stroke (mm)	Applications
AX05	1,175	310	280	600	General purpose
AX07	1,323	290	310	620	General purpose
AX08	1,471	280	330	620	General purpose
AX09	1,619	270	340	680	General purpose
AX10	1,767	260	360	720	General purpose
AX11	1,915	250	380	720	General purpose

**Low speed 4 stroke diesel engine AX series (1,175 ~ 1,915 kW)**

**Low fuel oil cost**  
AX series obtains the lowest specific fuel consumption in the same class engine. A big torque with a large-diameter screw enhance propulsive efficiency, and realize low fuel consumption.

**Low lubricating oil consumption [ALS + AP ring]**  
ALS (Electronically controlled lubrication system) can lubricate necessary amount as it is needed, which realizes 0.5 g/kWh in cylinder lubrication rate. With AP ring which restrains carbon from adhering the piston and prevents the sliding surface of cylinder from polishing, it keeps the replenishment of system oil almost naught.

**INQUIRIES**  
Tokyo head office, Overseas Sales Dept.  
4th floor, Shin-Kokusai Bldg. 3-4-1, Marunouchi, Chiyoda-Ku, Tokyo Japan.  
Tel: 81-3-5560-9005  
E-mail: kaigainet@akasaka.co.jp  
https://www.akasaka-diesel.jp

**FURUNO**

**TrueEcho CHIRP WITH UNIQUE FISH SIZE INDICATOR**  
**FCV-19006**

Identify size and distribution with the fish size graph

With a quick glance at the simple and efficient graph, you can get all the information you need to identify fish size and distribution. Once you know the fish size and distribution, you can use this information to estimate the species and whether it's a viable target or not. Together with the TrueEcho CHIRP technology, the FCV-19006 allows you to make an accurate decision. (Recommended transducers: CH250LH or CH250LR)

Accurately judge which target to go after

Experience incredibly accurate echoes, even in deep waters thanks to our TrueEcho CHIRP technology. The FCV-19006 is well suited for trawlers where accurate and reliable information about the sea bottom is necessary. Utilizing the fish size graph, choosing the right target is simple, allowing you to maximize your time at sea, while avoiding unnecessary tows.

**FURUNO ELECTRIC CO., LTD.**

## JAPANESE MARINE EQUIPMENT FOR SQUID JIGGING VESSELS



<https://www.jsmea.or.jp/en/products/product-list-squid-vessels/>

JSMEA squid

CLICK!

