

Jsmea News

JSMEA holds Japan Maritime Event in Greece

The Japan Ship Machinery and Equipment Association (JSMEA) organized a ship machinery and equipment seminar in Athens, Greece on October 17, 2025, with financial support from The Nippon Foundation. It was JSMEA's first such event orchestrated in the Mediterranean nation's capital

Some 227 local representatives from shipowners and other Greek maritime industries attended the Japan Maritime Event seminar. On behalf of JSMEA, Vice-Chairman Urabe Reijiro and Executive Advisor Kuzu Tomoo led a delegation of 88 members from 18 affiliated companies (including representatives from their local agencies).

As a partnership event to Posidonia, an international shipping exhibition held in Greece, Japan Maritime Event was divided into

morning/afternoon and evening sessions with negotiating tables prepared at both seminar sessions.

JSMEA Vice-Chairman Urabe kicked off the event with opening remarks to welcome the attendees. Afterwards, keynote speeches were made by Mr. Suzuki Seiichi, an expert on maritime policies at the Embassy of Japan in Greece, and Mr. Aihara Daiji, general manager of the Tech Expertise Center at Nippon Kaiji Kyokai (ClassNK), with both introducing up-to-date as well as other topics in the maritime industry.

Representatives of the 18 affiliated companies then got busy giving presentations on their latest technologies and products. To provide details, active interchanges were made at the negotiating tables through lively exchanges of questions and answers. Members were in consensus in rating Japan Maritime Event as highly successful.

CONTENTS

JSMEA holds Japan Maritime Event in Greece	1-2
JSMEA Organizes Thailand-Japan Maritime Business Matching Forum 2025	3-4
JSMEA Attends Marintec China 2025	5
Lunch Reception with MASA	
Delegation in Japan	6
JSMEA members Information	
JRCS Co. Ltd.	7
BEMAC Corporation	8
NAGASAKI SEMPAKU SOBI CO., LTD.	9
MOL Techno-Trade, Ltd.	10
TOBU JUKOGYO CO., LTD.	11
JSMEA Visits World's Largest Shipyard IMI	12





JSMEA Vice-Chairman Urabe Reijiro makes the opening remarks.



Another keynote speech is given by Mr. Aihara Daiji from ClassNK.



Members of the JSMEA delegation pay a courtesy visit to Ambassador Ito Koichi at the Japanese Embassy in Greece.

After Japan Maritime Event, JSMEA held an evening reception, at which Mr. Ito Koichi, ambassador of Japan to Greece, and JSMEA Executive Advisor Kuzu gave addresses. They both thanked the local maritime affairs organizations for their cooperation and support in staging the seminar. They also expressed hope that both nations' maritime industries will continue to grow.

With both JSMEA members and potential Greek customers highly rating Japan Maritime Event, JSMEA said it is determined to continue promotions in the Greek market to have interchanges with local parties.



JSMEA Executive Advisor Kuzu Tomoo speaks at the evening reception.



Japanese Ambassador to Greece Ito Koichi gives an address.

About Japan Maritime Event

1) Time and date: 11:00-22:30, Friday, October 17, 2025

Morning/afternoon session: 11:00-15:00

Evening session: 17:00-22:30 (including the abovementioned reception)

Business matching area: 10:00-19:45

2) Venue: Grand Hyatt Athens

3) 18 Attending JSMEA member: BEMAC Corp.; Daihatsu Infinearth Mfg. Co., Ltd.; Fuji Trading Co., Ltd.; Fujikura Composite Inc.; Japan Engine Corp.; JRC Marinformet Co., Ltd.; JRCS Co., Ltd.; Maekawa Mfg. Co., Ltd.; MOL Techno-Trade, Ltd.; Mitsubishi Kakoki Kaisha, Ltd.; Mitsubishi Heavy Industries Marine Machinery and Equipment Co., Ltd.; Nabtesco Corp.; Nakashima Propeller Co., Ltd.; Naniwa Pump Mfg. Co., Ltd.; Semco Ltd.; Taiyo Electric Co., Ltd.; Tokyo Keiki Inc.; and Yanmar Power Solutions Co., Ltd.

URL for a YouTube video promoting the attending JSMEA members:



JSMEA Organizes Thailand-Japan Maritime Business Matching Forum 2025

The Japan Ship Machinery and Equipment Association (JSMEA) held a ship machinery and equipment seminar in Bangkok, Thailand on Wednesday, July 30, 2025 with financial support from The Nippon Foundation. It has been eight years since JSMEA last orchestrated such an event in Bangkok. The Thailand-Japan Business Matching Forum 2025, which was presented in cooperation with the Thai Shipowners' Association (TSA), was attended by 128 individuals from local shipowners and other parties with ties in maritime affairs. On behalf of JSMEA, Chairman Kinoshita Kazuhiko and Vice-Chairman Urabe Reiji was joined by representatives from 11 affiliated companies.

At the beginning of the seminar, JSMEA Chairman Kinoshita thanked the TSA for its help in holding the forum, and added that JSMEA will join hands with the TSA to further develop the maritime industry. TSA Chairman Suraphon Meesathien in his address said that Thailand aims to achieve net zero emissions by 2050. He stressed that the TSA is happy to have interchanges with leading Japanese ship machinery and equipment manufacturers at the forum, hoping to bring many opinions, solutions and ideas for decarbonization back

home. Following the chairmen's addresses, the 11 JSMEA members came on stage to present their respective cutting-edge technologies and products.

The seminar was divided into three sessions, which made it easy for the attendees to best grasp the information. Session 1: Engine/Alternative Fuel; Session 2: Electric/Operational Efficiency; and Session 3: After-Service/Maintenance.

After the presentations, the JSMEA members gave briefings on their technologies and products and answered many questions by the attendees at the negotiation tables prepared in the venue. The seminar was deemed highly successful from beginning to end.

JSMEA signed a memorandum of understanding (MoU) on information exchanges with the TSA in 2019, which led to JSMEA Chairman Kinoshita, Vice-Chairman Urabe and TSA Chairman Suraphon exchanging views on decarbonization initiatives, human resource retention and so on at this forum.



JSMEA, TSA representatives at a photo session





JSMEA Organizes Thailand-Japan Maritime Business Matching Forum 2025

- 1) **Dates:** December 2-5, 2025
- 2) **Venue:** Shanghai New International Expo Centre (SNIEC)
- 3) **Number of visitors:** over 100,000

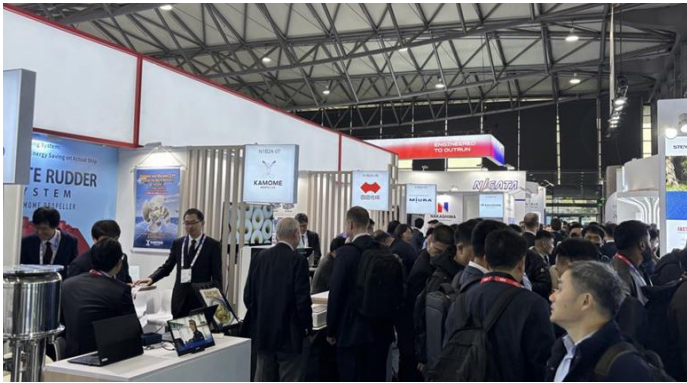
About the Japan Pavilion

- 1) **Exhibition area:** 764 square meters (booth No. N1B3A-06 at Hall N1)
- 2) **Number of exhibitors:** 37 (Akasaka Diesels Ltd.; BEMAC Corp.; Chugoku Marine Paints, Ltd.; Daihatsu Infinearth Mfg. Co., Ltd.; Daikin MR Engineering, Ltd.; Fuji Trading Co., Ltd.; The Hanshin Diesel Works, Ltd.; HSN-Kikai Kogyo Co., Ltd.; Ibuki Kogyo Co., Ltd.; IHI Power Systems Co., Ltd.; Japan Engine Corp.; Kamome Propeller Co., Ltd.; Kanagawa Kiki Kogyo Co., Ltd.; Kawasaki Heavy Industries, Ltd.; Mitsubishi Kakoki Kaisha, Ltd.; Mitsui E&S Co., Ltd.; Mitsui Heavy Industries Marine Machinery and Equipment Co., Ltd.; Miura Co., Ltd.; Mizuno Strainer Industries Co., Ltd.; Musashino Co., Ltd.; Nabtesco Corp.; Nakashima Propeller Co., Ltd.; Nippon Hakuyo Electronics, Ltd.; Nippon Kaiji Kyokai; Nippon Yusen Kabushiki Kaisha; Nishishiba Electric Co., Ltd.; NRP-Riken Corp.; Sasakura Engineering Co., Ltd.; Shikoku Chemicals Co., Ltd.; Shinko Ind. Ltd.; Sunflame Co., Ltd.; Taiyo Electric Co., Ltd.; Tanabe Pneumatic Machinery Co., Ltd.; Tobu Jukogyo Co., Ltd.; Volcano Co., Ltd.; Yanmar Power Solutions Co., Ltd.; and YDK Technologies Co., Ltd.)
- 3) **QR code to the Japan pavilion:**

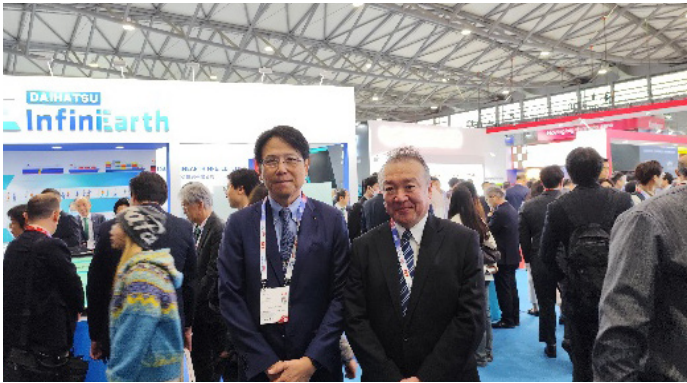


JSMEA Attends Marintec China 2025

The Japan Ship Machinery and Equipment Association (JSMEA) participated in Marintec China 2025, held at the Shanghai New International Expo Centre (SNIEC) on December 2-5, 2025, with funding provided by The Nippon Foundation.



On December 2, the opening day of Marintec China 2025, Japan's consul general in Shanghai, Mr. Okada Masaru, visited the Japan Pavilion to discuss business operations with member companies.



Consul General Okada Masaru visits the Japan pavilion.

On December 4, the third day of Marintec China 2025, a delegation from JSMEA and nine member companies visited Sajee Marine Engineering Co., Ltd., a ship machinery and equipment repair firm near Shanghai. Following company introductions, the delegation toured the repair facilities.



A JSMEA delegation visits Sajee Marine Engineering.

As one of the world's largest maritime exhibitions, Marintec China 2025 welcomed over 100,000 visitors. To promote Japanese products and services to Chinese ship owners and shipyards, JSMEA organized the Japan Pavilion, featuring 36 member companies alongside Nippon Kaiji Kyokai (ClassNK).



About Marintec China 2025

- 1) **Dates:** December 2-5, 2025
- 2) **Venue:** Shanghai New International Expo Centre (SNIEC)
- 3) **Number of visitors:** over 100,000

About the Japan Pavilion

- 1) **Exhibition area:** 764 square meters (booth No. N1B3A-06 at Hall N1)
- 2) **Number of exhibitors:** 37 (Akasaka Diesels Ltd.; BEMAC Corp.; Chugoku Marine Paints, Ltd.; Daihatsu Infinearth Mfg. Co., Ltd.; Daikin MR Engineering, Ltd.; Fuji Trading Co., Ltd.; The Hanshin Diesel Works, Ltd.; HSN-Kikai Kogyo Co., Ltd.; Ibuki Kogyo Co., Ltd.; IHI Power Systems Co., Ltd.; Japan Engine Corp.; Kamome Propeller Co., Ltd.; Kanagawa Kiki Kogyo Co., Ltd.; Kawasaki Heavy Industries, Ltd.; Mitsubishi Kakoki Kaisha, Ltd.; Mitsui E&S Co., Ltd.; Mitsui Heavy Industries Marine Machinery and Equipment Co., Ltd.; Miura Co., Ltd.; Mizuno Strainer Industries Co., Ltd.; Musashino Co., Ltd.; Nabtesco Corp.; Nakashima Propeller Co., Ltd.; Nippon Hakuyo Electronics, Ltd.; Nippon Kaiji Kyokai; Nippon Yusen Kabushiki Kaisha; Nishishiba Electric Co., Ltd.; NRP-Riken Corp.; Sasakura Engineering Co., Ltd.; Shikoku Chemicals Co., Ltd.; Shinko Ind. Ltd.; Sunflame Co., Ltd.; Taiyo Electric Co., Ltd.; Tanabe Pneumatic Machinery Co., Ltd.; Tobu Jukogyo Co., Ltd.; Volcano Co., Ltd.; Yanmar Power Solutions Co., Ltd.; and YDK Technologies Co., Ltd.)
- 3) **QR code to the Japan pavilion:**



About the Visit to Sajee Marine Engineering

- 1) **Time and date:** 7:30-15:30, Thursday, December 4, 2025
- 2) **Purposes:** To introduce JSMEA activities, tour the facilities, and exchange insights on maintenance services
- 3) **Number of member companies represented in the visiting delegation:** 9 (Akasaka Diesels Ltd.; Daihatsu Infinearth Mfg. Co., Ltd.; Fuji Trading Co., Ltd.; HSN-Kikai Kogyo Co., Ltd.; Isoda Metal Co., Ltd.; Japan Ship Technology Research Association; Nakakita Seisakusho Co., Ltd.; Niikura Kogyo Co., Ltd.; and Yanmar Power Solutions Co., Ltd.)

Lunch Reception with MASA (MIVI; Malaysia Industry Visit Initiative) Delegation in Japan

In order to expand our presence in overseas markets and strengthen our international network, JSMEA has been actively promoting to maritime organizations and associations around the world, including shipowners' associations.

This time, the Malaysian Shipowners' Association (MASA), with whom we have signed a Memorandum of Understanding (MoU), visited Japan under the "MASA Industry Visit Initiative (MIVI)" activity. JSMEA welcomed them and held a networking lunch reception with our member companies on Thursday, November 6, 2025, at AP Shinbashi in Tokyo.

The MIVI delegation, comprising 19 representatives including the MASA Chairman and shipowners from the Malaysian merchant and offshore support vessel (OSV) sectors, participated in the event. The occasion provided a valuable opportunity for them to gain a deeper understanding of the current trend of Japan's maritime industry and its advanced ship equipment.



Opening Speech from JSMEA Chairman, Mr. Kinoshita



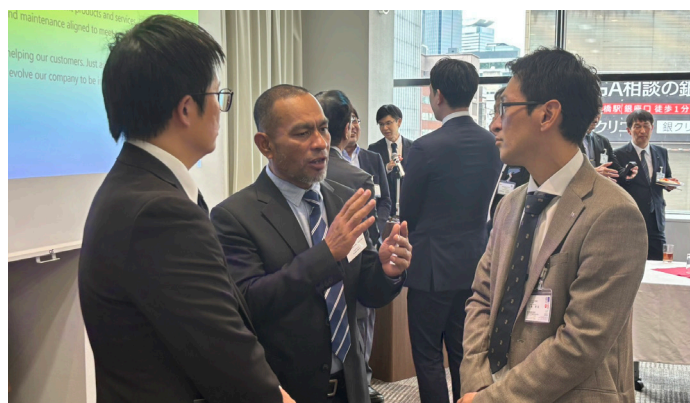
Opening Speech from Mr. Abdul Hafidz Bin Abdul Rahman, Executive Committee of MASA



The event began with a welcome address by our Chairman, Mr. Kinoshita, followed by an opening speech by Executive Committee of MASA, Mr. Abdul Hafidz Bin Abdul Rahman. In total of 54 participants from 25 of our JSMEA member companies attended to warmly welcome MIVI delegation and promote their latest products & technologies.

During the lunch reception that followed, participants enjoyed a warm and friendly atmosphere while exchanging information on the latest developments in Malaysia's maritime sector, as well as on our members' products and technological advancements. Both sides shared insights on their respective initiatives and explored potential business opportunities.

This event served to further strengthen collaboration between the Japanese and Malaysian maritime industries and marked another significant step toward deepening future cooperation. JSMEA will continue to enhance partnerships with shipowners' associations and related organizations abroad, striving to create new international business opportunities for our members and contribute to the growth of Japan's maritime industry.



JRCS® Just Right Customer Solution

Power & automation systems on over 8,000 vessels worldwide

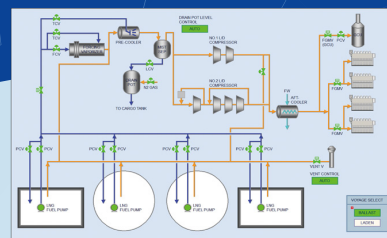
High voltage switchboard

Compliant with IEC 62271-200 metal-enclosed requirements



Integrated automation system (IAS)

Ensuring simultaneous engine and cargo management for high-performance vessels



infoceanus

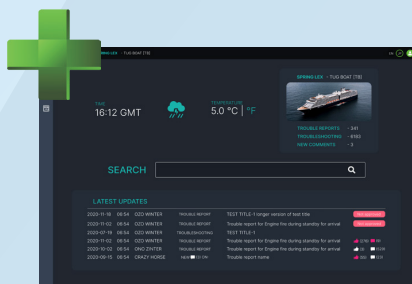
Digital innovation with edge and cloud technologies



infoceanus



connect



assist



command

Alternative Maritime Power (AMP)

Turn-key solution for zero-emission ports
Significantly reducing emissions from ships
while at port
Compliant with IEC/ISO/IEEE80005-1



JRCS Co. Ltd.

URL : www.jrcs.co.jp E-mail : jrcs@jrcs.co.jp Tel : +81 (0)83 775 2030

■JRCS Shimonoseki (headquarters)
■JRCS Tokyo (headquarters) ■JRCS Toyoura
■The Netherlands ■Singapore ■Shanghai



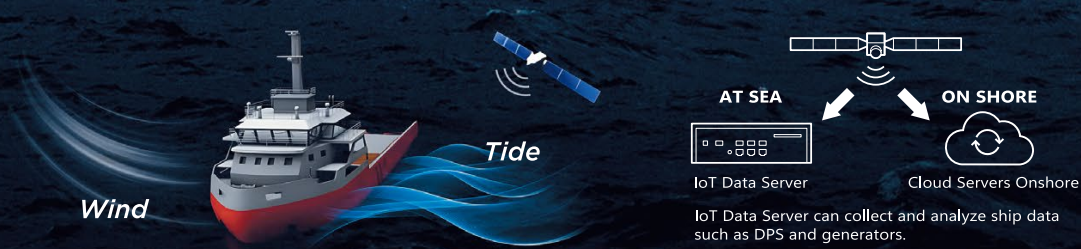
Contact us here

BEMAC

BEMAC-DPS

Dynamic Positioning System

We have developed an original Dynamic Positioning System which controls a vessel on a required position and heading automatically. This system is type-approved by ABS and BV, and meets DPS-2 class standards. We can also supply shaft generator, DC switchboard, alarm monitoring system and power management system as a package for the offshore support vessels working at the ocean energy development and the marine resources site.



Permanent Magnet Shaft Generators

- Compact, lightweight, and highly efficient
- Received orders for over 500 units
- Wide range of options from 600kW to 12,000kW



Sharing power between DC-Hubs for optimum operation

- Generators to operate at optimum load point
- EBL allows a ring configuration with closed bus-tie operation
- Reduced fuel consumption
- Improved system redundancy, even during DP3 operations

BEMAC Corporation

105 Noma, Imabari-city, Ehime Pref. 794-8582 Japan Tel +81-898-25-8282 www.bemac-jp.com/en/

Accommodation for Next IoT Generation

Smart Accommodation concept for accommodation to enhance seafarers' comfort.

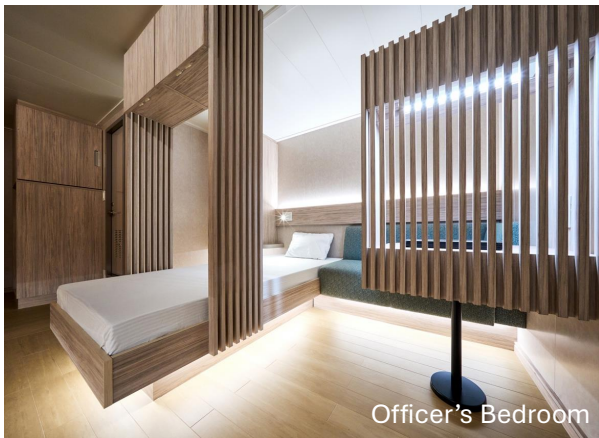
NSS has been developing “Accommodation for Next Generation” to address key challenges in the maritime industry, such as labor shortages, by improving the onboard living environment. Through interviews with over 100 companies, we’ve gathered valuable insights to create customized and distinctive cabin designs tailored to each client’s specific needs. We are currently evolving this design idea into a “Smart Accommodation” aligned with the advancing IoT era by using smart technologies for better onboard experiences.

The day room for captains features an island-type desk in the center of the room to create a dignified atmosphere. Upon request, we offer a variety of color schemes and layouts, presented with 3D visualizations.



Captain Day Room

The bedroom for officers is designed with a unique bed that appears to float above the floor. Indirect lighting creates an atmosphere that makes officers feel like they are not inside a ship.



Officer's Bedroom

In addition to cabin development, we also specialize in domestic production of panels and furniture. Our furniture is available in steel, aluminum, and wood. For naval ships, we particularly focus on weight reduction and flame resistance.



Aluminum Furniture



NAGASAKI SEMPAKU SOBI CO., LTD.

1-5, Nishikotohira-Machi, Nagasaki, 850-0933, Japan

Tel: +81-95-828-6777 / URL: <http://www.nssjpn.co.jp/en/>

E-mail: nsnssbusiness@o365.nssjpn.co.jp



PBCF (Propeller Boss Cap Fins)

PBCF is the pioneer and the best seller in an energy-saving device installed on a propeller to improve propulsive efficiency by eliminating hub-vortex and by reducing torque loss. In consequence, vessel fuel consumption can be reduced by up to 5%. Mitsui O.S.K. Lines (MOL) originally developed PBCF in 1987, and Advanced PBCF was launched in 2017. The total number of installations is now more than 4,500 vessels all over the world.



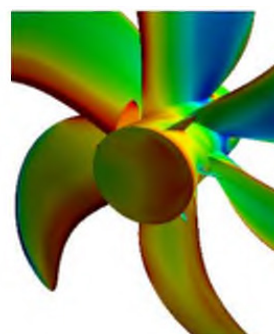
Principal Benefits of PBCF

- Saving fuel up to 5%, the corresponding reduction of NOx, and CO2 emissions.
- Reduces propeller-induced underwater-noise and vibrations.
- Simple and quick installation, just the replacement of the existing propeller boss cap.
- Suitable to both new buildings and retrofit applications.
- Pay-back time is basically less than 1 year, even at low fuel prices.

Development of Short-Bodied and Specialized PBCF

– for Vessels with a narrow clearance between rudder and propeller

Using the knowledge and experience gained over 38 years, MOL Techno-Trade has now developed Short-Bodied and Specialized Design PBCF. It has a shortened body (cap length) to enable the installation in extremely narrow clearances on vessels between the rudder-bulb and the propeller boss due to the huge-sized bulb. By the optimization of its fin shape and height obtained through CFD calculations in individual cases, the special shape PBCF can make such rudder-bulb equipped vessels possible to increase the fuel-saving effect.



INQUIRIES

MOL Techno-Trade, Ltd. / PBCF & Wind Propulsion Department
2-1, 2-Chome, Kanda Nisihi-cho, Chiyoda-ku, Tokyo, 101-0054, Japan
Tel : +81-3-6367-5380 Fax : +81-3-6367-5516
E-mail : moltech-pbcf@molgroup.com



POWERFUL GRABBING WITH EFFICIENCY

TOBU JUKOGYO, known for TOBU GRAB, has been manufacturing cargo handling machines since 1963. Regarding the shipping industry, we have supplied grab buckets for more than half a century as deck machinery.

Grab buckets are one of our main products. We could offer various models, shapes, and structures of grab buckets.

Radio controlled single rope type

is available to any type of cranes. You could install it just by hanging on the crane hook. Due to its simple structure, normal maintenance is easy and running costs can be reduced.

Electro-hydraulic type is operated by a hydraulic system that is driven by two electric motors which enable to grab cargo with strong power.

4 rope type could be made larger to match the performance of large crane.

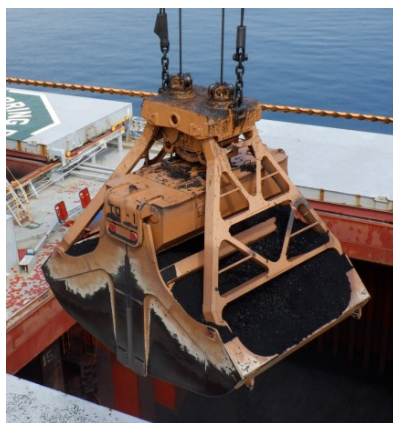
Orange peel type is suitable for various shapes of cargo, from heavy and large lumps to light and small lumps, to dig deeply and grab.



Radio Controlled Single Rope



Electro- Hydraulic type



4 rope type



Orange peel type



Other products : Hoppers

All types of bulk cargo, including coal, ores, grains, and biomass fuels, are loaded into dump trucks and containers. The cargo loading status can be visually confirmed from the control room. Automatic operation to discharge a fixed amount is also possible. There are also types equipped with dust collectors for cargo with a lot of dust. The machine can be towed by a trailer or wheel loader.

東部重工業株式会社 TOBU JUKOGYO CO.,LTD.

4-12-20 Kitazakae, Urayasu, Chiba 279-0002

TEL +81-47-352-5318 (Sales Dept.)

E-mail: info@tobugrab.com

URL : <https://www.tobugrab.com/en/>



BUCKEPPi



(Mascot for TOBU)

Our products grab and hold not only the cargo, but also the customers' hearts firmly! We would be happy to assist you if you have any concerns or questions.

JSMEA Visits World's Largest Shipyard IMI



The Japan Ship Machinery and Equipment Association (JSMEA), along with representatives of 15 affiliated companies, visited International Maritime Industries (IMI) in Saudi Arabia on December 8, 2025. The 30-person delegation promoted their products and exchanged views with IMI representatives at what is currently the world's largest shipyard under construction.

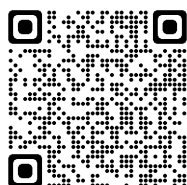
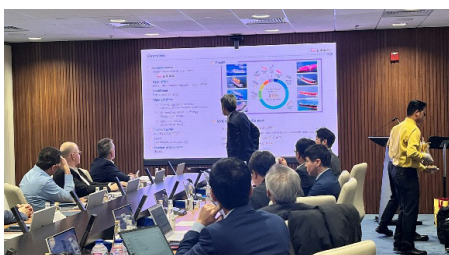
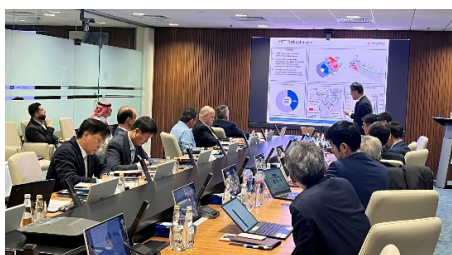
The visit was JSMEA's ongoing efforts to gather information on new technologies, develop new markets, and contribute to the growth of the global maritime industry—spanning commercial vessels and offshore development facilities—through the supply of high-quality Japanese-made ship machinery and equipment.

On behalf of IMI, Mr. Abdulaziz Sabri, senior vice-president for Operation Services, led a delegation of over 10 people from the engineering, procurement and other teams. The JSMEA delegation held discussions with this group on each organization's new technologies, products, and services.

The joint meeting concluded after a productive exchange of views and a comprehensive Q&A session. Following the discussions, several JSMEA companies were informed of their approval of vendor registration, while others were invited to submit the necessary documentation to begin the process.

The JSMEA delegation toured the IMI facilities, where shipyard construction is scheduled for completion on December 25, 2025. Leveraging these extensive facilities, IMI said it will focus on building a wide range of vessels, including commercial ships like very large crude carriers (VLCCs) and bulk carriers, offshore assets such as rigs and offshore support vessels (OSVs), and naval vessels.

Following its IMI visit, JSMEA plans to leverage the insights gained to further discussions on future actions and policies within its internal boards, committees, and working groups.



Printed in Japan in SPRING 2026

Head Office:

Toranomon Toyo Kyodo Building, 13-3, Toranomon 1-chome, Minato-ku, Tokyo 105-0001, Japan
Tel: +81-3-3502-2041 Fax: +81-3-3591-2206 URL: <http://www.jsmea.or.jp>

Overseas Offices:

JETRO Hongkong, Ship Machinery Department

Room 4001, 40/F., Hopewell Centre, 183 Queen's Road East, Wan Chai, Hong Kong, China
Tel: +852-2501-7291 Fax: +852-2868-1455

JETRO Houston, Offshore and Maritime Department

1221 McKinney, LyondellBasell Tower, Suite 4141, Houston, Texas 77010, U.S.A.
Tel: +1-713-759-9595 Fax: +1-713-759-9210

JETRO Singapore, Ship Machinery Division

Hong Leong Building, #38-01 to 05 #37-02A 16 Eaffles Quay, Singapore 048581
Tel: +65-6429-9522 Fax: +65-6224-1169