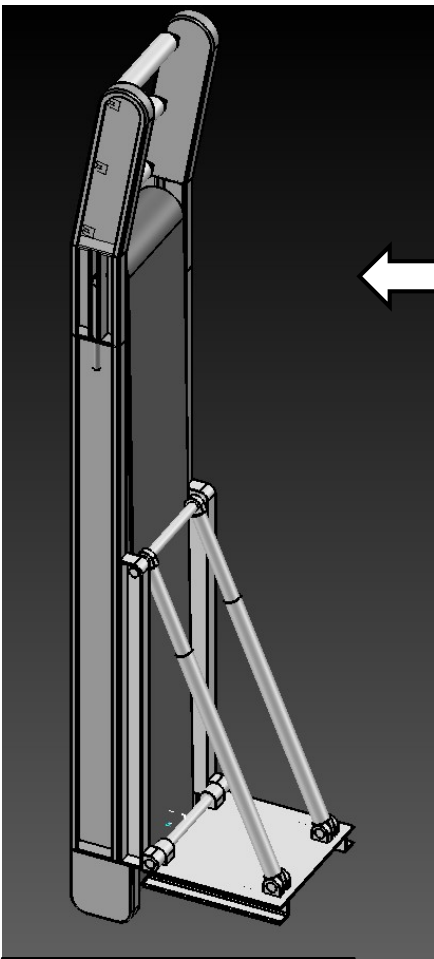
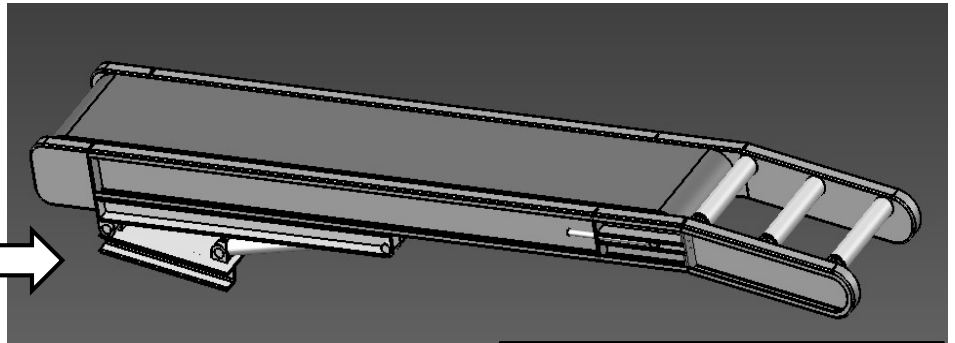


# Hull-mounted unloading conveyor



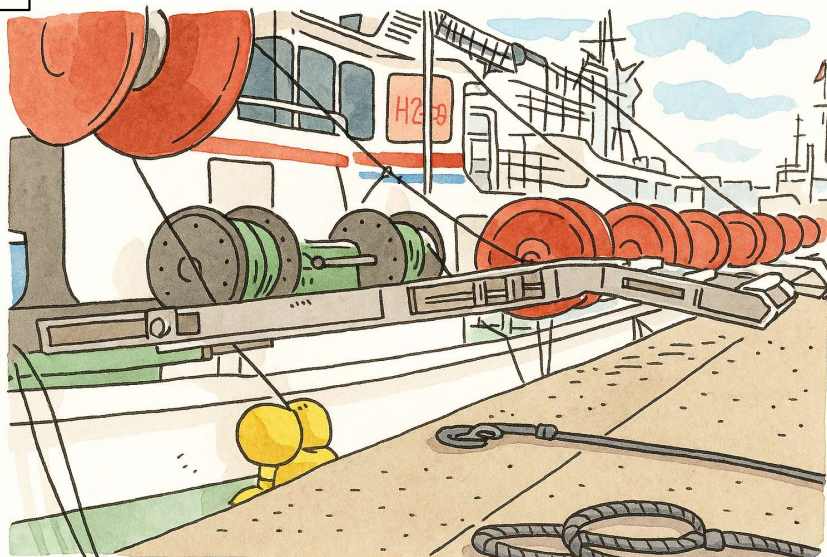
When stored



When unloading

## 【Features】

- The angle of the conveyor can be adjusted to 7 levels according to the height of the quay.
- After unloading, it can be stored in the hull.



~Image during unloading~

<We also manufacture various types of conveyors  
according to your requests>



ONODERA IRON WORKS CO., LTD.

Homepage QR code→

