

Thin-walled plain bearings specialized in alloy bearings such as copper alloys and white metal.

From design and development to manufacturing, we provide high-standard, high-quality bearings through in-house integrated production.

Applicable fields :

From special environments (high speeds and high temperatures) in chemical plants to marine engines and reducers. Can be used in a wide range of fields, including high-load, high-durability bearings used in

Since its establishment in 1905, we have specialized in plain bearings focused on alloy bearings such as copper alloys and white metal. We have a proven track record of supplying to various fields, including marine vessels, industrial machinery, and chemical plants. In particular, we excel in the manufacturing of thin-walled plain bearings, which are rare in Japan.



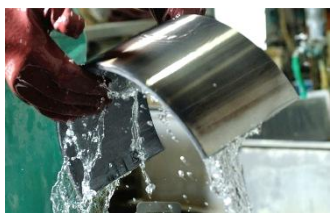
centrifugal casting



precision machining



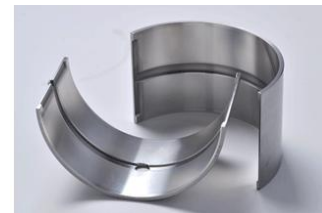
correction/correction



plating process



Micro analysis
component analysis



thin wall plain bearing

We propose the optimal bearing based on performance requirements and operating conditions. To ensure that the bearing functions in the best condition without trouble, we excel in the design and manufacturing of thin-walled plain bearings (thickness from 2 mm), which require advanced expertise backed by proven experience. This includes setting the optimal oil film thickness, a crucial factor for plain bearings, and determining the assembly conditions necessary for reliable operation.



Isodametal Co., Ltd.

WEB: <https://www.isodametal.co.jp/>

MAIL: info@isodametal.co.jp

TEL: +81-3-3759-5351