

FURUNO



FULL-CIRCLE COLOR SCANNING SONAR

Model **FSV-25 MARK-2**

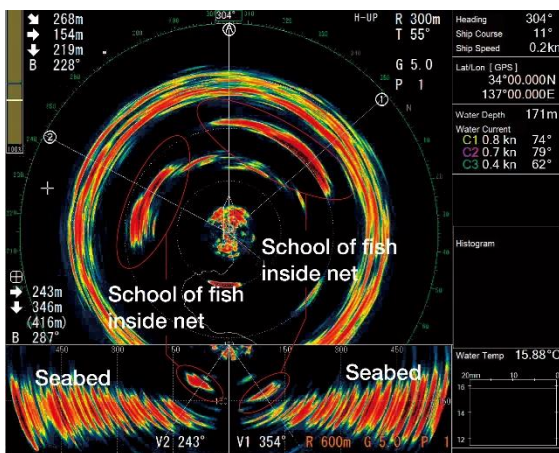
More details on
www.furuno.com



Extended detection range to identify schools of fish at great distances

Thanks to recent advancements in low-frequency transducer elements, signal processing and increased transmission power, the detection range has been greatly improved (by approx. 30% compared to the previous model) with the FSV-25MARK-2 series. You can instantly spot and follow schools of fish from several kilometers away.

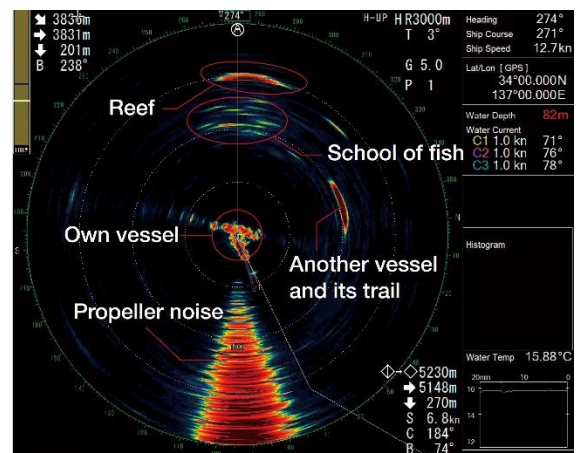
■ Close-range detection



【300 m range】

Two schools of fish can be seen right after the purse-line has been pulled and the net has been closed.

■ Long-range detection



【3000 m range】

A school of fish 2000 m ahead. The fish school appears to swim close to a reef.

FURUNO ELECTRIC CO., LTD.

Find your local contact point ➡

