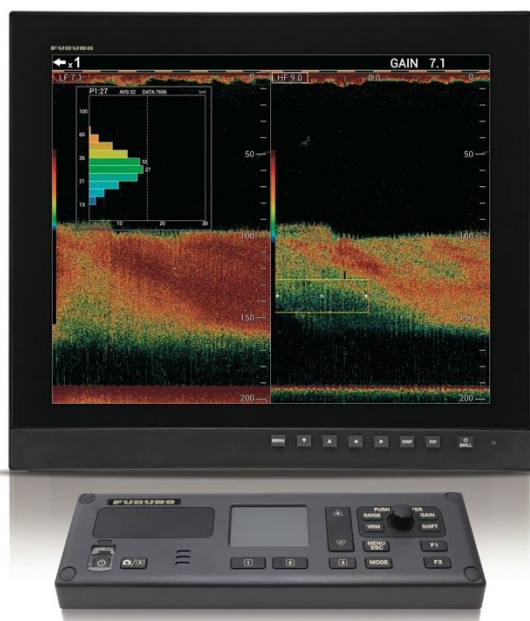


# FURUNO



## TruEcho CHIRP WITH UNIQUE FISH SIZE INDICATOR

Model **FCV-1900G**

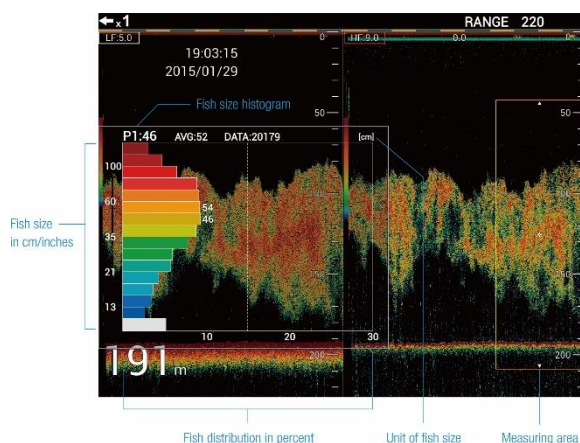
More details on  
[www.furuno.com](http://www.furuno.com)



## Identify size and distribution with the fish size graph

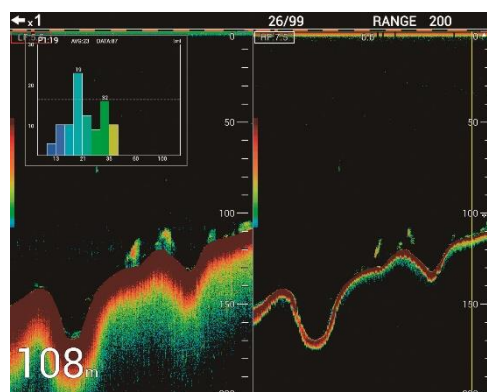
With a quick glance at the simple and efficient graph, you can get all the information you need to identify fish size and distribution. Once you know the fish size and its distribution, you can use this information to estimate the species and whether it's a viable target or not. Together with the TruEcho CHIRP™ technology. The FCV-1900G allows you to make an accurate decision.

(Recommended transducers: CM265LH or CM599LH)



## Accurately judge which target to go after

Experience incredibly accurate echoes, even in deep waters thanks to our TruEcho CHIRP™ technology. The FCV-1900G is well suited for trawlers where accurate and reliable information about the sea bottom is necessary. Utilizing the fish size graph, choosing the right target is simple, allowing you to maximize your time at sea, while avoiding unnecessary bycatches.



**FURUNO ELECTRIC CO., LTD.**

Find your local contact point

