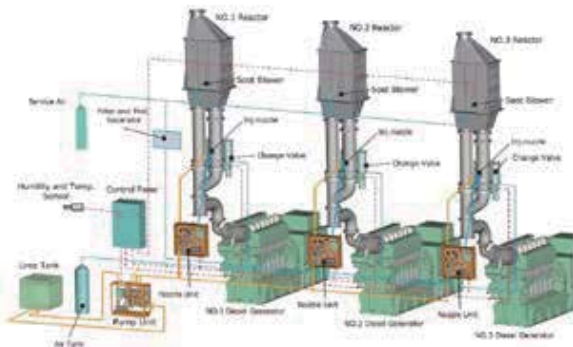


Selective Catalytic Reduction System

YANMAR YANMAR CO., LTD.

<https://www.yanmar.com/global/>

Selective Catalytic Reduction System



The SCR System with Three Unit Engine Installations



YANMAR will offer you our SCR system, which is suited perfectly to our engine specifications, to meet the requirements of Tier III NOx emission standards by IMO. NOx emissions can be reduced by more than 80% after our SCR system is loaded.

A catalyst reactor is set up after the turbocharger in flow. Our SCR system is combined with a bypass system both for switching in Emission Control Areas (“ECA”) and for saving space in the engine room. The urea injection nozzle with the air-assisted is implemented within a branched exhaust pipe. The piping design is essential in converting (waste) into ammonia, which functions as a reducing agent. The reactor is also equipped with an automatic soot blower system. Each engine requires a catalyst reactor, whereas only one set of pumping unit and one set of control panel are installed for all reactors.

On the other hand, an engine with SCR system is designed to set a minimum exhaust gas temperature depended on the sulfur content in fuel. With this design, our engine can achieve a high durability and an excellent reliability for a long time.

INQUIRIES

No.1 Sales Group

Overseas Sales Division

Marine Products Sales and Marketing Division

Power Solution Business

2-1-1, Yaesu, Chuo-ku, Tokyo, 104-8486, Japan

Tel : +81-3-3275-4909 Fax : +81-3-3275-4969

<http://www.yanmar.com>

E-mail : ichiro_fuwa@yanmar.com