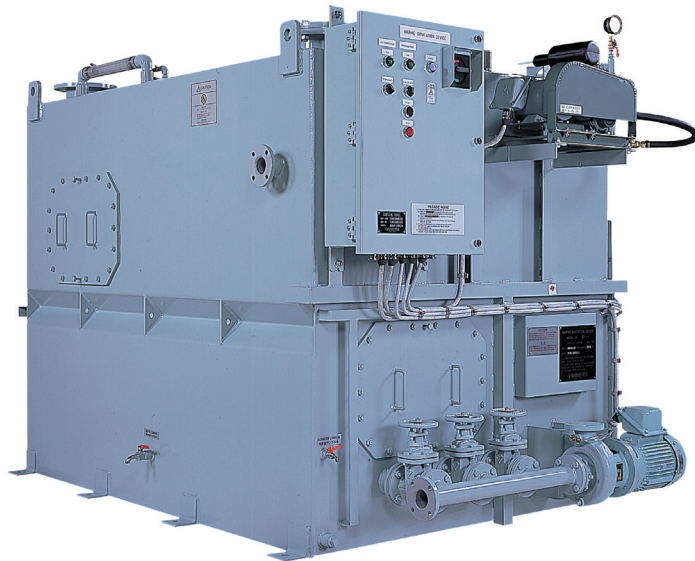


Sewage Treatment Equipment

 **SASAKURA ENGINEERING CO., LTD.**

<http://www.sasakura.co.jp/e/index.html>

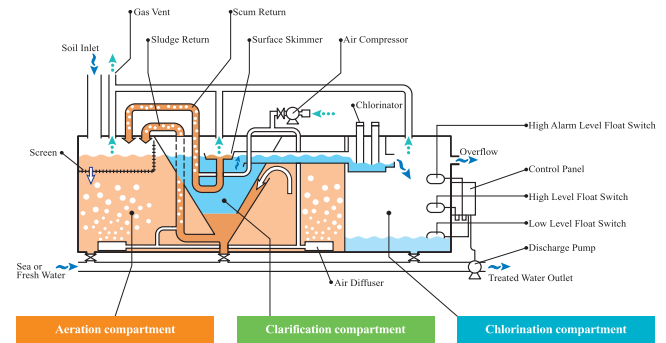
Biological type Sewage Treatment Plant



The vessel discharge restrictions of the International Convention for the Prevention of Pollution from Ships are not limited to oil, but rather control sewage as well.

Sasakura's Sewage Treatment Plant has met to IMO(International Maritime Organization) regulation, MEPC. 159(55).

◆ Flow Diagram



INQUIRIES

7-32, 4-chome, Takejima, Nishiyodogawa-ku, Osaka, 555-0011, Japan
Tel : +81-6-6473-2134
E-mail : marine@skm.sasakura.co.jp