

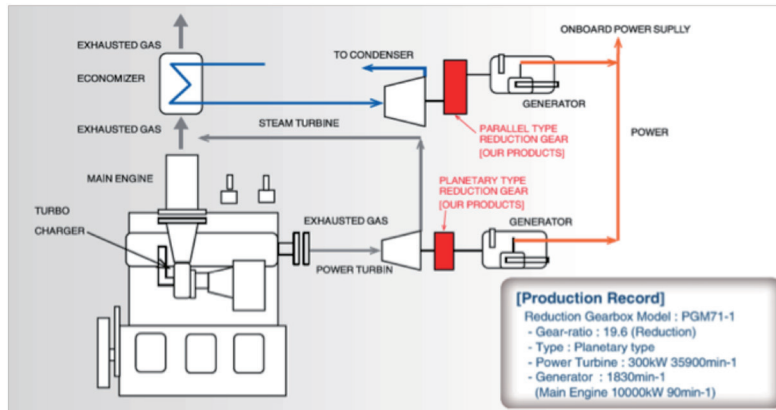
Reduction Gear



HITACHI NICO TRANSMISSION CO., LTD.

<http://www.hitachi-nico.jp/en/index.html>

Reduction Gearbox for Exhaust Power Recovery System



Exhausted gas from marine diesel engine remains much energy to be recovered.

Our reduction gearbox is used in the exhaust power recovery system with power turbine and steam turbine.

- Light weight and compact design.
- High reliability on many production experience for continuous use high speed turbine.
- Two kinds of type are selectable as parallel-type and planetary-type, depend on turbine speed.

INQUIRIES

405-3 Yoshinocho 1-chome, Kita-ku, Saitama, 331-0811, Japan

Tel : +81-48-652-6708 Fax : +81-48-652-8719

Inquiries : <https://www8.hitachi.co.jp/inquiry/hitachi-nico/en/form.jsp>