

Natural gas, NOx, GHG

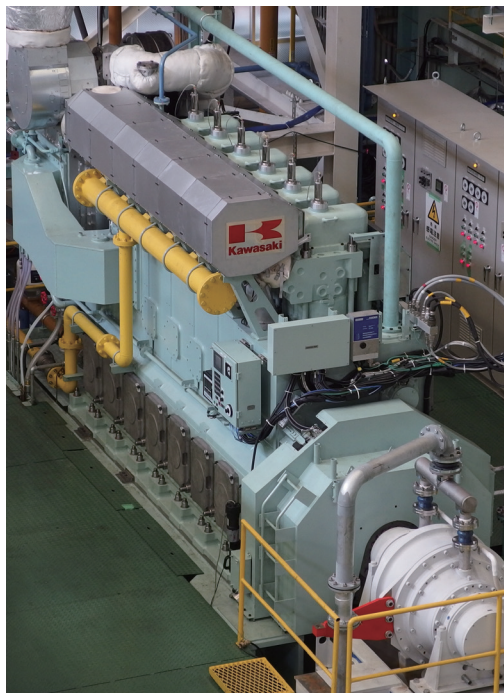
Gas Engine

 **Kawasaki**
Powering your potential

KAWASAKI HEAVY INDUSTRIES, LTD.

<http://global.kawasaki.com/en/mobility/marine/machinery/index.html>

Green Gas Engine (L30KG)



In April 2014, Kawasaki Heavy Industries, Ltd. obtained the type approval certificate from DNV-GL for Green Gas Engine L30KG — the main engine for large vessels fueled solely by gas with an output capacity of over 2 MW.

Green Gas Engine L30KG can reduce emissions far below the level set by IMO NOx Tier III regulations without relying on special equipment such as an SCR (Selective Catalytic Reduction) system. Its superior environmental performance also allows significant reduction of CO₂ and SOx emissions compared to diesel engines, thus helping marine vessels comply with various environmental regulations.

INQUIRIES

Marine Machinery Sales Department

1-14-5, Kaigan, Minato-ku, Tokyo, 105-8315, Japan

Tel : +81-3-3435-2374 Fax : +81-3-3435-2022

E-mail : marine-machinery-sales-e@khi.co.jp