

No. 31

BEMAC

BEMAC Corporation

<https://www.bemac-jp.com/en/research.html>

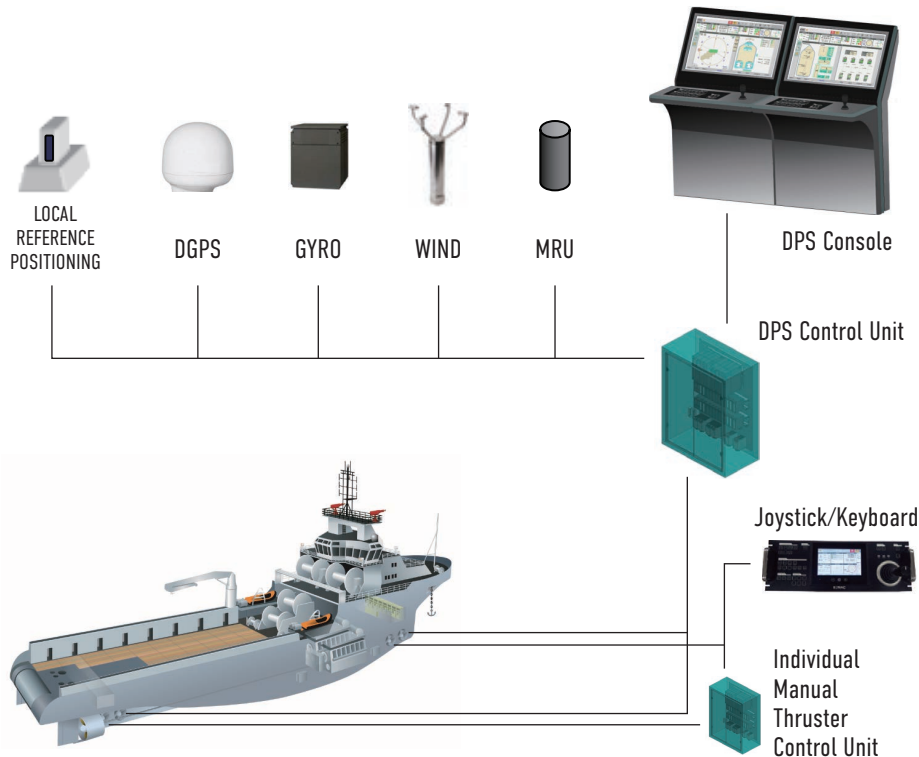
Head Office : 105 Noma, Imabari, Ehime 794-8582 Japan Onishi Factory : 1520 kuo Onishi-cho Imabari, Ehime 799-2294 Japan
Tel : +81-898-25-8282 / Fax : +81-898-25-8293 / E-mail : sales@bemac-jp.com

Product

Integrated Dynamic Positioning System

Overview

We have developed an original Dynamic Positioning System which controls a vessel on a required position and heading automatically. We can also supply alarm monitoring system and power management system as a package for the offshore support vessels working at the ocean energy development and the marine resources site. This system meets the standard ABS's "Guide for Dynamic Positioning System DPS-2 notation". Since the system is equipped redundant CPUs, communication line, power supply, and so on, it carries on control even if something goes wrong with the system.



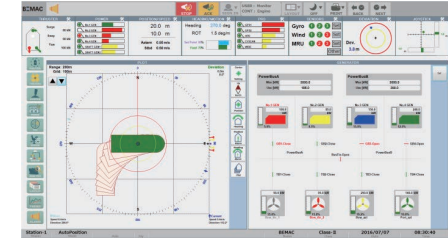
DPS Control Mode

- Auto position/Auto heading
- Joystick with auto position/auto heading
- Model control
- Auto tracking
- Independent manual thruster control

Overview of Display

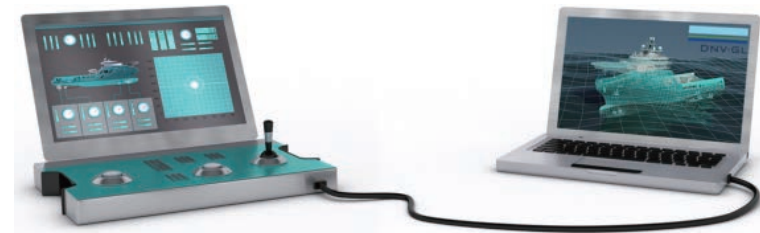
- Position Plot display
- Joystick display
- Thruster display
- Generator and Power line diagram display
- Sensor and position reference system display
- Trend display
- Alarm display

AHTS	PSV	FPSO	Drill Ship	Semi-sub
▶	▶			



DP System HIL Testing

We have been performing DP hardware-in-the-loop(HIL) test to verify proper functionality of our control system according to rules and regulations by connecting to the DNV-GL vessel simulator.



Certifications / Applicable rules

ABS