

No.
19



TAIKO KIKAI INDUSTRIES CO., LTD.

<https://www.taiko-kk.com/en/>

209-1 Shimotabuse, Tabuse-cho, Kumage-gun, Yamaguchi 742-1598 Japan

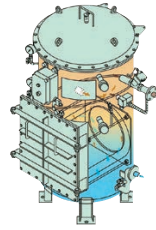
Tel : +81-820-52-3113 / Fax : +81-820-53-1001 / E-mail : business-marine@taiko-kk.com

AHTS	PSV	FPSO	Drill Ship	Semi-sub
▶	▶	▶	▶	▶

Product

15 ppm Bilge Separator

TAIKO's USH series of marine bilge separators was developed by combining the technology of our three previous bilge separators when MEPC.107 (49) took effect., The USH series of new and powerful bilge separators is equipped with a high-performance, long-life coalescer capable of dealing not only with high-density and viscosity oil, but also emulsions that previous coalescers could not deal with.



15 ppm Bilge Separator

USH

- Capacity : 0.15-0.5m³/h
- Max. Working Pressure : 0.2MPa
- Application : Bilge



15 ppm Bilge Separator

USH

- Capacity : 1.0-5.0m³/h
- Max. Working Pressure : 0.3MPa
- Application : Bilge



Bilge Discharge Monitor

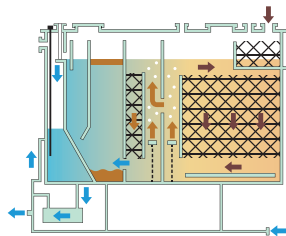
BDM-FT-1000

- Capacity : 0.15-5m³/h
- Optional item for separator
- LCD to visualize status of separator system



Sewage Treatment Plant

Our SBH series of marine sewage treatment plants are small, high-performance items that were developed by incorporating the sewage treatment technology we developed over many years in the business. The products in the SBH series can be used on all ships with more than 400 gross tons and a crew of at least 15 as specified in Annex IV of the Marpol 73/78 Treaty. We've also simplified operation and maintenance.



*SBH Series Sewage can not be installed in Passenger ships which sail on special areas (Baltic Sea).

Sewage Treatment Device

SBH

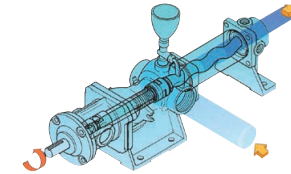
- Capacity : 15,25,40,65(persons)
- Max. dis. Press. : 0.2MPa
- Application : Sewage



**MEPC.227 (64)
Conformity Product**

One Rotor Screw Pump

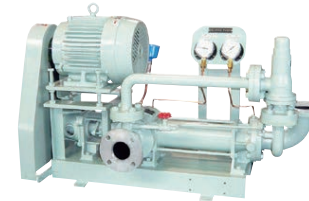
Our high-volume one rotor screw pumps feature the rotation of a single-threaded metal male screw rotor inside the casing of a rubber double-threaded female screw. This causes continual movement along the screw axis in the space formed between the two screws, which conveys the liquid. These pumps are used to convey liquids of both high and low viscosity, as well as liquids containing solid particles. Their most common use is to convey liquids that contain dirt, sludge, or bilge.



One Rotor Screw Pump

HNP•HNP-CS

- Capacity : 0.3-50m³/h
- Max. dis. Press. : 1.2MPa
- Application : Sludge, Sewage, Bilge



One Rotor Screw Pump

HNFA

- Capacity : 0.04-7m³/h
- Max. dis. Press. : 2.0MPa
- Application : Dewatering Cake

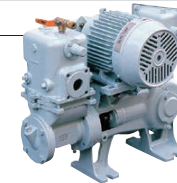


Piston Pump

Piston Pump

LD

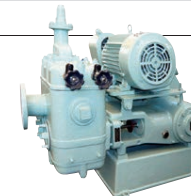
- Capacity : 0.5-5.0m³/h
- Max. dis. Press. : 0.3MPa



Piston Pump

HPK

- Capacity : 5.0-40m³/h
- Max. dis. Press. : 0.45MPa



Service Network



Reference

TAIKO have experience for Engine room Pumps for all kind of commercial and offshore vessels.